

# The Katahdin Hairald

Official Publication of Katahdin Hair Sheep International



*Volume 37 No. 2*

[www.katahdins.org](http://www.katahdins.org)

*Spring 2025*

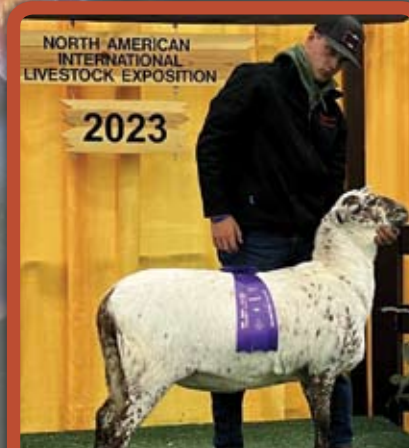


# SAMPLES OF QUALITY KATAHDINS

THAT HAVE BEEN SOLD AT PREVIOUS SALES. QUALITY LIKE THIS WILL BE CONSIGNED TO: MIDWEST STUD RAM SALE, KHSI EXPO, AND SCKA SALE IN MUMFORDSVILLE, KY



These 2 rams were High Selling Rams in our 3<sup>rd</sup> Annual Sale



Reserve Sr Champion Ewe at NAILE Jr show purchased at 2023 annual sale



First Place Fall Ewe Lamb at the 2024 Missouri State Fair.



Reserve Sr Champion Ewe at 2022 Midwest Ram sale



Watch for our **ONLINE SALE** with Integrity on June 2.



Please check out our website and Facebook page for new updates and pictures



Prairie Lane Farms  
Katahdin Sheep

**Henry Shultz & Family**  
6219 Audrain Road 125 • Centralia, MO 65240  
573-682-7127 • [www.prairielanefarm.net](http://www.prairielanefarm.net)



We're bringing a nice set of sheep to the following sales, out of these stud rams! Look for us at the show/sales and let's talk sheep!

- \*\*\*Ohio Showcase
- \*\*\*Midwest Stud Ram Sale
- \*\*\*The Katahdin Expo
- \*\*\*SCKA Field Day in Munfordville, KY

Thank you to the following customers for buying fall lambs late this winter and early spring. We appreciate your business in trusting our genetics!

- \*\*\*Melody Chaney - KY
- \*\*\*Jack & Bonnie Knowlan - MO
- \*\*\*Jordan Cocke - TN



**Yellowstone - RIV 1021**

A RIV "High Genes" son. Such a great ram with so many good pieces. I have really enjoyed watching his lambs mature and grow.



**Double Shot - CEK 0279**

Out of the old MVF #2 ewe and RIV 939 "Mean Gene" (now owned by Lucas Roy) - this ram has not disappointed us one bit. He is a stud ram and his lambs are very impressive.



**Moving On - RIV 995**

A RIV "Equalizer" son. I can't say enough about this ram. He's probably been our wildcard and has sired some really impressive sheep that have done well for other producers and were very competitive in the 2024 NAILE show ring.



**Fancy's Silver Lining - RIV 1073**

A RIV 744 "Fancy" and RIV "Silver Creek" son. This ram is throwing some awesome feminine pieces that we are excited to see. You can't go wrong with the way he is bred!



**President - RIV 1018**

Our half maternal sibling to our 2022 Supreme Ewe at the NAILE, "First Lady". He is lined with genetics that work and that are pleasing on the eyes to watch in the flock.

**Quick Silver - RIV 1081**

Another RIV "Silver Creek" son and on the maternal side goes back to RIV 786 out of the old MVF #2 line. We hated that we lost this ram during the summer, but man did he sire some female power. We were lucky enough to get a decent amount of females out of him and plan to retain several of them.

Chad & Elizabeth Kiefer

10689 State Highway 72  
 Patton, MO 63662  
 Elizabeth: 573-944-3498  
 Chad: 573-712-8940  
 kiefersheepfarm@gmail.com



Find us on Facebook:  
 Kiefer Farms - Corgis, Sheep & Hay

# Welcome New Members

Jan. 1 - March 15,  
2025

## New Youth Members (4)

Evan Kinder – IN  
Ellenore Kemler- SC  
Anna Maye Jones - IN  
Drelynn Konkle - IN

## Indiana

Mark Page

## Iowa

Ryan Dezwarte

## Ohio

Katie Czirok  
Joshua Covault

## Oklahoma

Wendy Hart

## New Voting Members (47)

### United States

#### Alabama

Janet Maida  
Jeremy & Heather Clark  
Joshua Howard  
Haley Aultman  
Kay Woodyard  
Jacob Mclain

#### California

Daniel Alcalá  
David Odermiller

#### Georgia

Adam Bebart

#### Illinois

Mervin Yoder  
Christy Otto  
Scott Yunk  
Elycia Freeman

## Kentucky

Jennifer Urie  
Jody Chittum  
Taylor Pruitt  
Mark Knopp

## Minnesota

Bentley Boike  
Scott Revier

## Missouri

Brian & Beth Snow  
Timothy Sherman  
Katlynn, Whitnie, Baylor,  
Raeklynn, & Kutter Shepherd

## Mississippi

Sara Holt  
Cullen Wilcher

## New Jersey

Michele Logan

## South Carolina

Jeff & Adam Epperson &  
Aldous  
Ellenore Kemler

## Tennessee

Daniel & Amberly Clark  
Todd & Michelle Rutland  
Brian & Kimberly Price  
Brenda Mulligan  
Neal & Rachel Lambert  
Chad Shields

## Texas

Charlotte & Adam Payne  
Kevin Clark Fleming  
Christopher Prejean

## Virginia

Casey Kerrigan  
Lillian Azevedo  
Brian & Brandi Cregger

## Washington

Alex Hagiepetros

## West Virginia

Eric Nestor

## Wisconsin

Angeline & Michael Choudoir



*Searchable online membership directory*



[https://www.katahdin-pedigrees.org/public/members\\_p.php](https://www.katahdin-pedigrees.org/public/members_p.php)

**Send Registrations to:**  
**Brenda Lobdell Scheider,**  
**4543 North Henderson**  
**Road, Freeport, IL 61032**  
**Phone – 815-238-8110**  
**[Brenda@katahdins.org](mailto:Brenda@katahdins.org)**

# Spring 2025

VOLUME 37 | ISSUE 2



Alan Culham and Cindy DeOrnellis,  
Editors

[info@katahdins.org](mailto:info@katahdins.org)

Gail Hardy, Graphic Designer

[gail@xpressionsonline.us](mailto:gail@xpressionsonline.us)

## KHSI Operations

Alan Culham

717-335-8280 ext 1 • 717-335-8279 (fax)

PO Box 739 Fowlerville, MI 48836

[info@katahdins.org](mailto:info@katahdins.org)

<https://katahdins.org>

## KHSI Registry Office

### Digital Katahdin

Brenda Lobdell Scheider

4543 North Henderson Road

Freeport, IL 61032

815-238-8110

[brenda@katahdins.org](mailto:brenda@katahdins.org)

<https://katahdins.org/register-sheep/>

## KHSI Board of Directors

President ..... Dan Turner  
Vice President ..... Justin Fruechte  
Secretary ..... Mandy Fletcher  
Treasurer ..... Howard Covington  
Director ..... Cindy DeOrnellis  
Director ..... Karen Kenagy  
Director ..... Mike Jones

## Advertising

Display Ad Rates★: 2025 rates on page 5.

**Classifieds** - Classified sale ads for Katahdin or Katahdin-cross sheep are free to all KHSI members in the Katahdin Hairald and at the KHSI website. For the Hairald, limit length to 40 words. Contact Operations for classifieds at 717-335-8280 ext 1 or [info@katahdins.org](mailto:info@katahdins.org).

### Ad commitment to Xpressions for Summer 2025 Hairald due April 30<sup>th</sup>

★rates for display advertising are subject to change upon approval of the Board of Directors.

**Hairald Display Advertising** specs & booking info. contact Gail Hardy at Xpressions, Graphics Specialists, 717-335-8280 ext 4 or 479-439-0726

[gail@xpressionsonline.us](mailto:gail@xpressionsonline.us)

<https://xpressionsonline.us>

Ad design is available from Xpressions.

## Inside This Issue



## Articles

Director's Corner .....	5
A Must-Read If Showing Katahdins – Now Or In The Future .....	6
Meet Your Katahdin NSIP Rep: Matt Nolt.....	7
January 1 Sheep and Lambs Inventory Up Slightly .....	9
Composting Dead Sheep .....	21
Things to Consider When Buying or Selling Katahdins.....	23
NSIP Katahdin Percentile Report March 2025.....	26
Primer for Selling Sheep at a Purebred Livestock Auction.....	45

## Coming Events

SCKA Announces Annual Gathering & Private Treaty Sale.....	13
All-American Junior Show 2025 Schedule Announced.....	14
The KHSI 2025 Photo Contest is Now Open! .....	15
Katahdin Sale Roundup.....	29
Important Dates.....	29
Focus on Eweth Calendar .....	30
Educational Events Calendar .....	30
2025 Katahdin Expo and Sale.....	39
2025 KHSI Expo Lodgings .....	41

## KHSI Business

Searchable Online Membership Directory.....	3
2025 Katahdin Hairald Display Ad Prices & Publication Schedule .....	5
Having an Online Sale? Place an Email Blast.....	5
2025 KHSI Registry Office Report.....	10
Katahdin Association Announces New Staff.....	12
KHSI Membership Donations to Support Youth Activities.....	17
KHSI Members in the News! Dr. Andrew Weaver .....	18
Katahdin Hair Sheep International Balance Sheet as of December 31, 2024.....	33
KHSI Board of Directors Meetings.....	36
New Certified KHSI Hair Coat Inspector.....	44
Board of Directors Candidates Needed!.....	44
Katahdin Registry Services New Work Order and Fee Schedule .....	51

## Regular Features

Welcome New Members.....	3
RMKA Annual Educational Meeting Set for June 19-20, 2025 .....	15
2025 Youth Scholarship Deadline July 1st.....	18
2025 Dr. Leroy Boyd Katahdin Junior Show June 12 .....	20
Message From TexKat's President .....	27
KHSI Member's Guide .....	50
Classified Ads .....	52
Katahdin Recipe Forum: Lamb with Orzo.....	54
Regional Katahdin Groups.....	55
Advertisers Index (listed alphabetically) .....	56

Cover: "Becoming One with the Landscape" - Chelsea Anderson - VA 3rd Place Scenic Division 2024 KHSI Photo Contest.

Pictured Above: "Care of a Shepherd" - Chelsea Anderson - VA Open Division 2024 KHSI Photo Contest

# Director's Corner



**Dan Turner,  
KHSI President**

Greetings fellow Katahdin shepherds! Well, it is here! Digital Katahdin has finally become a reality,

though many, many months of work by a group of committed folks. A couple of old stalwarts were in the process for sure, but also a leader was discovered, as Justin Fruechte has been involved in leading the process for over a year. From exploration, planning, strategizing, interviewing,

budgeting, process mapping, canvassing, communicating, and making some tough decisions; it was a pleasure seeing his professional attributes lead the communication with the committees, and ultimately with Brenda Lobdell Scheider (doing business as Scheider Lobdell Ag Services LLC), who will be the Digital Katahdin Administrator. Things don't just happen in an association, and progressive benefits like this are rare to happen so quickly, as many groups just don't have the depth of talent and passion. KHSI lacks none of that, and many thanks to all who made this a reality.

The features of the Digital Katahdin program can be as basic as the standard registration has always been, if that is all you want to use of it... that is fine... almost nothing changes but an address. But, if you want to take your online flock to the next level, participate in a few webinars and live sessions, and learn how to develop your own sale catalog right out of your online flock records. Brenda is not just a data entry and organizational clerk,

but she will be the educator, marketer, and passionate cheerleader of all things Digital Katahdin has to offer. There is much benefit in this program, way beyond registry services for those who want to get the most from this benefit, but registry is the main service that we need to make sure is rock solid before we promote too much beyond the basics... but it is there.

We all hope that you will enjoy this new member benefit, this new relationship with Brenda, and this new era for Katahdins as we once again strive to keep supporting the best breed, with the best tools to show off with.

Thank you for your patience as we work through this process and we are striving to do all we can to make it as professional and personal as we can.

On a different note, we did fall short in the delivery services of our last issue of the Hairald, as we found many members (about 3%) received only portions of their copy, or none at all. The cover paper and stapling system were not sufficient to withstand some rigorous mail-handling machinery. We have taken noticeable steps with this issue to avoid this situation in the future. If you did not receive a readable hard copy of the last issue, please contact Alan at the office for a replacement issue.. Thanks to all, members and sponsors, for your understanding.

## 2025 Katahdin Hairald Display Ad Prices & Publication Schedule

Ad Size	Member Sheep Ads	Commercial Advertisers
	Cost - Color Ad	Cost - Color Ad
full page	\$300	\$400
1/2 page	\$160	\$250
1/4 page	\$100	\$125
1/8 page (business card)	\$60	\$75

### 2025 Hairald Publication Schedule

	Summer	Fall
Display Ad commitment due (inc. ad size)	Apr 30	Sept 5
Article Deadline	May 9	Sept 12
Display Ad Content Due to Xpressions	May 9	Sept 16
Classified Ads Due to Operations	May 18	Sept 22
Mailing Date (Bulk Mail)	Jun 20	Oct 27

- Advertisers who agree to advertise in 4 consecutive issues receive a 10% discount on each ad.
- The prices listed in the table above are for finished ad copy. It is the responsibility of each advertiser to either produce the final copy themselves or contract for that.

## Having an Online Sale? Place an Email Blast

*Opportunities for KHSI Members featuring Katahdins & Katahdin Cross Sheep*

Email blasts are available for purchase to send information about events and sales to the KHSI membership.

#### MEMBER RATES

- First mailing \$100
- Subsequent mailings \$50/each

#### NON-MEMBER RATES

- First mailing \$200
- Subsequent mailings \$100/each

Contact Operations office: [info@katahdins.org](mailto:info@katahdins.org)

**KHSI-717-335-8280**

# A Must-Read If Showing Katahdins – Now Or In The Future



By *Cindy DeOrnellis*

Marketing and exposure are some of the reasons Katahdin breeders and owners choose to exhibit their sheep at shows and sales. Mar-

keting Katahdins through shows and sales can be fun and profitable. Many sales require sheep be shown and placed for sale order. You need to follow a few simple practices when attending shows and sales.

Preparation and a well-planned breeding program are the keys to success. These general guidelines are a start to that road towards success.

Choose animals that are structurally correct with good hair coats and correct mouths. Rams should have two evenly sized testicles.

Sheep should be fed a high quality, nutritious diet consisting of a high-quality forage or grain with a good quality forage. Either diet should be supplemented with a balanced mineral.

Sheep that are broken to lead are much easier to handle in the show ring. The best training tool is a nylon sheep halter with a small chain that goes under the chin. These can be purchased from most sheep supply catalogs or farm stores. Start by tying the sheep to a rail or fence. Never leave a tied sheep unattended as they can slip the halter and injure or choke themselves. After the sheep have learned to stand tied without fighting the halter, teach them to lead.

Sheep should be washed several times before the show. This cleans the animal and helps remove loose hair. Any livestock soap or dish soap will work. Sheep may be left to dry naturally, towed off or blow dried. Brush or curry to remove loose hair. Trimming or clipping of hair is not allowed when animals are being pre-

pared for shows or sales. Feet should be trimmed if toes are long and/or sides are turning under.

Sheep should be washed and brushed the day before the show. No trimming or clipping of hair is allowed - just brushing and combing. Bed the pen with clean straw or wood chips to keep the sheep clean.

Before entering the show ring, give the animals a last-minute brushing and clean areas around nose, eyes and face with a wet towel. Applying fly spray to belly and legs may be helpful when showing in summer months.

Visiting with other breeders at shows and sales is a good way to pick up tips about breeding and showing. If new to showing, attend a show or watch archived shows from major sales. There are also showmanship videos on the internet and YouTube.

Sheep shows and sales provide excellent opportunities to make new friends and reconnect with old friends. Showing sheep teaches life skills, increases marketing options and makes great memories!

## BLOCK KATAHDINS

BMS

*Spring Ewe and Ram Lambs Available for your Selection.*



*Stop by for a visit.*



See us on  
Facebook  
Block  
Katahdins

*Raising registered Katahdins since 2019*

**BRUCE BLOCK • BROADLANDS, IL • 217-841-3080**

# Meet Your Katahdin NSIP Rep: Matt Nolt



Matt Nolt

Hi, I'm Matt Nolt, a sheep and crop farmer from Lancaster County, Pennsylvania. In 2008, at nineteen years old, I bought my first flock of commercial Katahdins and raised them on my parent's farm. I quickly faced

a shepherd's nightmare: hoof rot. None of the information available at the time indicated hoof rot was able to be eradicated, so the next year I sold the flock and purchased 30 registered Katahdins. Today, most of our flock traces back to these original ewes.

In 2013, I joined the National Sheep Improvement Program (NSIP) and started using Estimated Breeding Val-

ues (EBVs) to make genetic improvements to my flock. In 2016, I moved to our current farm in Lancaster County where we continue to improve our flock, and I was joined by my wife Katie in 2021.

Together we continue to find ways to help other shepherds. She is the secretary for PA Sheep and Wool Growers Association, and I co-host the podcast, Profitable Sheep and Goat Production. Every year we hold two, on-farm sheep sales where we offer educational sessions and networking opportunities for local shepherds. Almost all our breeding stock is sold at these sales and most of the buyers are commercial sheep producers.

Our flock consists of 320 ewes, a large percentage of which are Katahdins, but we also have White Dorpers, Texels and Romanovs. We recently added East Friesen sheep for my wife to milk. We grow cash crops and most of the feed for our sheep. In addition to farming, I seasonally work part-time off the farm as a crop scout. We also

have a guesthouse where we provide an opportunity for guests to stay at a working sheep farm.

After starting to use EBV's, I realized how much time I was saving by not needing to search through my raw data to find the animals with the best performance. The EBVs have helped me increase lambing percentage, milk & maternal characteristics, growth and other traits. I then use visual appraisal to further select for the type of animals I'm looking for. EBV's should always be used alongside visual phenotype observations and genetic tests. If we want Katahdins to continue to grow and excel as a breed, we must use all the tools at our disposal to produce the type of animals that the commercial flocks need.

A large part of my job as the Katahdin NSIP rep is mentoring and helping new or prospective NSIP members get started with the program. If there is any way I can help, feel free to reach out to me at [glenbrook114@gmail.com](mailto:glenbrook114@gmail.com) or (717) 419-1980.

## Gleaves Farm

Look for us at  
the Expo



**Gleaves Farm**  
**Pleasant View, TN**  
**615-945-3914**  
**lgleaves1@aol.com**



RIV 993 'Silver Creek' with RIV and SHU ewes.



THANK YOU, MIKE NELSH,  
for the opportunity to own  
this great ewe.  
RIV 1088 "Royal Lady"



We have a phenomenal set of Fall Lambs out of "Silver Creek", "Pa Chrome", and "Forced Momentum". Look for these at this year's sales and shows!



BMB 0607 "Forced Momentum" at 9 month of age.



RIV 993 "SILVER CREEK"

*In 2023, Country Lane Farms sold our herd of 150 Katahdin ewes and are focused on raising high quality registered breeding and show stock.*

*It was a pleasure meeting and getting to know everyone this year.*

*Melvin & family*



SRS 391 'Aphrodite' x RIV 993 "Silver Creek" ewe lamb.



# January 1 Sheep and Lambs Inventory Up Slightly

27 percent of the total sheep and lambs were hair sheep or wool hair crosses.



Released January 31, 2025, by the National Agricultural Statistics Service (NASS), Agricultural Statistics Board, United States Department of Agriculture (USDA).

## Coalfield Sheep Association

### 4th Annual Coalfield Hair Sheep Sale

Saturday, August 16, 2025 - 1:00 p.m.

Coalfield Agricultural Center • 449 Agriculture Drive, Clintwood, VA

Pre-Sale Educational Evening 6:00 p.m.

Friday, August 15, 2025 - Coalfield Agricultural Center

Guest Speaker – Susan Schoenian, Sheep and Goat Specialist Emeritus, University of Maryland Extension

Smith Reasor - Auctioneer

Concessions will be available

Seth Baker, President  
(276) 926-8900  
seth@sethbakerlaw.com

J. Pete Odle  
(276) 525-0727

Dickenson County Extension Office  
Brad Mullins  
(276) 926-4605  
wmullins@vt.edu

Local Lodging in Clintwood: Sleep Inn & Suites Reservations: (276) 796-1058  
Mention Coalfield Sheep Sale for a special rate of \$90/night

Online Bidding



TOP LIVESTOCK COMPANY  
Pre-Registration Required  
Call: 423-258-4952

FIND US ON FACEBOOK!



# 2025 KHSI Registry Office Report

1601 Current KHSI members!	JAN	FEB	MAR	2025 YTD
	#	#	#	#
2025 Katahdin Registration	901	579	927	2407
2024 Katahdin Registration	489	717	688	1894
2023 Katahdin Registration	726	872	788	2386
2022 Katahdin Registration	532	747	857	2136
2021 Katahdin Registration	1447	635	749	2831
2020 Katahdin Registration	527	478	309	1314
2019 Katahdin Registration	480	488	456	1424
2018 Katahdin Registration	1383	824	560	2767
2017 Katahdin Registration	498	395	414	1307
2025 Katahdin Transfers	244	330	204	778
2024 Katahdin Transfers	402	409	395	1206
2023 Katahdin Transfers	385	289	405	1079
2022 Katahdin Transfers	237	216	416	869
2021 Katahdin Transfers	504	265	438	1207
2020 Katahdin Transfers	403	259	146	808
2019 Katahdin Transfers	301	472	272	1045
2018 Katahdin Transfers	637	386	216	1239
2017 Katahdin Transfers	192	156	220	568

**KHSI Classified Ads  
now offers Livestock  
Transportation**



**LOOKING FOR A RIDE?**

FREE 60 day listing for both KHSI members and non-members

**LOOKING TO HAUL?**

FREE 60 day listing for KHSI members. \$100 annual fee for non-members



# Fahrmeier Katahdins

At Fahrmeier Katahdins we combine visual appraisal with the power of multigenerational GEBVs to select the best replacement lambs for our flock.

Why use only one selection method when you could be using both?



Measured Performance Proven Genetics

Lynn & Donna Fahrmeier  
13305 Flournoy School Road  
Wellington, MO 64097  
816-517-5049 • lfahrmeier@msn.com



We are planning to consign ROD 2471 to the Midwest Stud Ram Sale. He was 4<sup>th</sup> place January ram lamb in the 2024 National Junior Show and 5<sup>th</sup> place in the National Open Show at NAILE. His sire, LY 215 'Leonardo,' was the 2022 MWSRS Grand Champion Ram.



ROD 2457, a January ewe lamb sired by 'Beamus,' sold to Hannah Cargill. 1st place at 2024 NAILE Open Show.



## Mark Your Calendars For Our 1<sup>st</sup> Annual Online Sale with PL Auctions.live on June 1, 2025

Watch for our consignments to the Ohio Showcase in May and Midwest Stud Ram Sale in June.

We will be offering a strong group of fall and spring lambs sired by Lauden Acres LY 215 'Leonardo' NSIP #6403102021LY0215, Buckeye Acres BAG 4250 'Beamus' NSIP #6402052021BA4250 and Riviera 1009 (932) NSIP #6403102022RIV009 like these pictured to the left.

**We use flock records, EBVs, and visual appraisal to select for:**


- Maternal Traits
- Pounds of Lamb Weaned
- Structural Soundness
- Muscle

MEMBER  
NSIP



Tyler Rodman | Tyler@RodmanFarms.com | 417-241-2751 | Marshfield, MO

David Rodman | David@RodmanFarms.com | 407-242-4814

For updates and pictures check out: [www.rodmanfarms.com](http://www.rodmanfarms.com) | 

# Katahdin Association Announces New Staff

Brenda Lobdell Scheider has been contracted as the new Katahdin Hair Sheep International Digital Administrator and Registrar. Brenda has been involved in the purebred sheep industry for decades and has extensive management experience with associations and non-profits.

Brenda will be working on developing the Digital Katahdin system and providing training and orientations to members as the new system is rolled out this spring. She will be available for ongoing member support as Digital Katahdin comes online. In addition, she will be serving members as the KHSI registrar, assisting members with registrations, transfers and other membership programs.

A graduate of the University of Illinois, Brenda has worked in marketing, sales, communications and fund development for a variety of cooperatives, associations and non-profit organizations, most recently as the Executive Director of the Wisconsin

4-H Foundation.

KHSI Board President Dan Turner says, "Brenda's background in marketing, communications and development brings to KHSI a wealth of knowledge and experience, as well as a broad perspective that will help us expand Digital Katahdin to serve our members."

Digital Katahdin is being developed to assist Katahdin breeders with their flock management needs. The platform will be used as the cornerstone of the breed registry but will also be available to record and track performance data, which is becoming more important in the decision-making processes required to produce, feed and market efficiently.

Digital Katahdin is a superior tool to help Katahdin breeders register, track, evaluate and analyze their flock. Digital Katahdin will provide real-time critical performance data to all Katahdin breeders, including seed stock producers, commercial produc-

ers and commercial feeders.

"I am passionate about agriculture and, specifically, the sheep industry, and am committed to helping advance the purebred industry," Brenda shares. "I appreciate good livestock that are productive and meet the needs of the customer and consumer. I am looking forward to working with other like-minded people who are also passionate about advancing our industry."

Brenda and her husband Tim Lobdell own an ag consulting firm Scheider | Lobdell Ag Services and Lobdell Dorpers, a seedstock operation consisting of 50 ewes. They have sold breeding stock across the country and exported genetics internationally. Currently they are working with IVF to expand their genetic base and create marketing opportunities. While they have bred multiple national champions, including most recently the 2024

CONTINUED ON PAGE 13

## Keep your eye out for us at the expo this year!

**GEM STATE KATAHDINS**

**Nate Miller**  
(208) 987-0519  
gemstatekatahdins@icloud.com  
f Gem State Katahdins  
Plummer, Idaho

A set of ram lambs out of GFS M005 Megaplier x Old Red daughter

GFS M005 "Megaplier"

NMK

NSIP National Sheep Improvement PROGRAM

# SCKA Announces Annual Gathering & Private Treaty Sale

The South Central Katahdin Association invites one and all to their annual Gathering and Private Treaty Sale. Join us at Union County Fairgrounds, New Albany, Mississippi, May 30 & 31, 2025, as the SCKA celebrates its 25th anniversary. Friday evening will be a time of networking and fellowship, viewing sheep for sale, and sharing a meal. We will enjoy hearing from founder Mark Dennis and other long-term members. Saturday holds a full slate of educational sessions. Presenters include: Dr Rocky Lemus-Mississippi State University, Chris Sweat-Hope Sheep

and Goat Livestock Auction, Christi Keeler-Purina nutritionist, Christina Ballard-Smart Reproduction/Delta Livestock Diagnostics. Participants will be treated to a variety of door prizes. After lunch, featuring a lamb dish, we will hold our annual business meeting for members.

No Fee to attend! We do ask participants to visit our website and register via the Eventbrite link. <https://www.hair-sheep.com/> Also find us on FB: organization page "South Central Katahdin Assn-SCKA" and public group "SCKA Sheep Corner."

## KHSI ANNOUNCES NEW STAFF, CONTINUED FROM PAGE 12

Reserve National Champion Ram, they are most proud of the crew of young people with whom they work each year.

Brenda will be scheduling virtual training meetings to meet members and to assist them in learning to use Digital Katahdin. She is available for individual phone consultations and will be operating the registry office beginning May 1.

Katahdin Registry Office  
Brenda Lobdell Scheider  
4543 North Henderson Road  
Freeport, Illinois 61032  
Phone | 815.238.8110  
Email | [Brenda@Katahdins.org](mailto:Brenda@Katahdins.org)

NEW ADDRESS FOR REGISTRY

### KHSI Registry Office/Digital Katahdin

### Brenda Lobdell Scheider

**4543 North Henderson Road, Freeport, IL 61032**

**815-238-8110 • [brenda@katahdins.org](mailto:brenda@katahdins.org)**



Silas Gingerich  
(276)870-6234  
[silasfromgfs@gmail.com](mailto:silasfromgfs@gmail.com)

Joe Gingerich  
(276)870-9563

📍 Gingerich Family Farm  
Jonesville, VA



Watch for these and more at sales this summer!

Mark your calendars for our online sale June 5, 2025!

Fall rams & ewe lambs available off the farm.







GFS

# All-American Junior Show

## 2025 SCHEDULE OF EVENTS - SPRINGFIELD, IL

### TUESDAY, JULY 1st

2:00 PM – All Barns Open for Arrival

### WEDNESDAY, JULY 2nd

**ALL DAY** – All Barns Open for Arrival  
9:00 AM - 5:00 PM – Welcome Table Open  
9:00 AM – 6:00 PM – Vet Check Available  
3:00 pm – 5:00 PM – Early Pick-Up of Entry Packets & Exhibitor T-Shirts

### THURSDAY, JULY 3rd

11:00 AM - **ALL SHEEP MUST BE IN PLACE**

8:00 AM – 11:00 AM

- Welcome Table Open
- Vet Check Continues
- Pick-Up of Entry Packets & Exhibitor T-Shirts Continues

8:30 AM – 11:30 AM

- Registration Paper Check-In (*Make sure Health Papers have been Vet Checked*)
- Promotional & Wool Show Check-In

10:00 AM – 1:30 PM – Lamb Camp (**one session with snacks/drinks provided**)

11:00 AM – 1:00 PM – Market Lamb

Weigh In & Classifying

11:00 AM – 5:00 PM – Skil-A-Thon Open

NOON – 1:00 PM – Weaver Fitting Clinic

1:00 PM – 5:00 PM – Promotional & Wool

Show Judging (**fleece preparation education session at beginning**)

1:30 PM – 3:30 PM – Judging Contest

3:30 PM – Ice Cream Truck Social

4:00 PM – Lead Line Classes followed by Dress A Sheep Competition

### FRIDAY, JULY 4th

7:30 AM – Opening Ceremonies, Group & State Photos

9:00 AM – Skil-A-Thon & Virtual Shearing Open

9:00 AM – Individual & Team Showmanship:

**RED RING: JJ Maddox**

Class 12: Age 15

Class 13: Age 16

Class 14: Age 17

Class 15: Age 18

Class 16: Age 19

Class 17: Age 20

Class 18: Age 21

Team Class 5 & 6 (breaks posted)

**WHITE RING: Paul Kuber**

Class 8: Age 11

Class 9: Age 12

Class 10: Age 13

Class 11: Age 14

Team Class 3 & 4 (breaks posted)

**BLUE RING – Judge: Justin Fruechte**

Class 1: Age 4 & Under

Class 2: Age 5

Class 3: Age 6

Class 4: Age 7

Class 5: Age 8

Class 6: Age 9

Class 7: Age 10

Team Class 1 & 2 (breaks posted)

**NOON - 4:00 PM** – AAJS Sales & Thank You Booth Open *\*all exhibitors please write at least one note!\**

**15 Minutes After Completion of Showmanship** – Breed Classes Begin

**RED RING – Judge: JJ Maddox**

Oxford

Katahdin

Texel (move to another ring if needed)

**WHITE RING – Judge: Paul Kuber**

Cheviot

Natural Colored

Merino (move to another ring if needed)

**BLUE RING – Judge: Justin Fruechte**

Lincoln White & Natural Colored

Horned Dorset

Nat'l North Country Cheviot

Columbia (move to another ring if needed)

5:00 PM Skil-A-Thon & Virtual Shearing Closes for the day

6:30 – 8:00 PM – Blome Pizza Party

7:00 PM – Cornhole Tournament

### SATURDAY, JULY 5th

7:00 AM – Breed Classes Begin

**RED RING – Judge: JJ Maddox**

Southdown

Dorset Adv (move to another ring if needed)

**WHITE RING – Judge: Paul Kuber**

National Corriedale

Hampshire Fitted & Slick

Nat'l Romney White & Natural Colored

Babydoll Southdown

Valais Blacknose (move to another ring if needed)

**BLUE RING – Judge: Justin Fruechte**

Border Leicester White & Natural Colored

National Suffolk Fitted & Slick

Cotswold

National Tunis

Targhee (move to another ring if needed)

9:00 AM – Skil-A-Thon & Virtual Shearing Opens

9:00 AM – AAJS Sales & Thank You Booth Opens *\*all exhibitors please write at least one note!\**

10:00 AM – Raffle Tickets for Sales Incentive Program must be turned in to AAJS Booth

10:00 AM – Scholarship Applications must be turned into Show Office

2:00 PM – Skil-A-Thon Closes

2:00 PM – Virtual Shearing Closes

4:00 PM – AAJS Sales & Thank You Booth Closes

6:00 PM – Pony Shoes Dinner

6:30 PM – Ag Olympics

### SUNDAY, JULY 6th

7:00 AM – Breed Classes Begin

**RED RING – Judge: JJ Maddox**

Shropshire

Montadale (move to another ring if needed)

**WHITE RING – Judge: Paul Kuber**

Dorper

White Dorper

Rambouillet (move to another ring if needed)

**BLUE RING – Judge: Justin Fruechte**

Polled Dorset Fitted & Slick

AOB (move to another ring if needed)

8:00 AM – NOON – AAJS Sales &

Thank You Booth Open

**Immediately following Completion**

**of breed shows** – Supreme Champion

Ram & Ewe Drives, Closing Ceremonies

Award Presentations and Raffle Drawing

- All Sheep released immediately following Completion of Closing Ceremonies. For the health of the animals **PLEASE ONLY LOAD TACK** prior to closing ceremonies. **ANY SHEEP LEAVING EARLY WILL FORFEIT PREMIUMS, PENS WILL BE CHECKED.**

12:00 AM – BARN OFFICIALLY CLOSES. ALL SHEEP must be out.

#### SHOW COMMITTEE AND STAFF:

Deb Hopkins, Show Chairman

Carrie Taylor-Kelly, Jo Bernard, Dave Trotter, Richard & Judy Schambow, Judy Moore, Jeff Ebert, Jake Herrig, Nancy Minter

#### ILLINOIS REPRESENTATIVE:

Melanie Hall

#### JUDGES:

JJ Maddox, OK  
Paul Kuber, WA  
Justin Fruechte, SD

#### ANNOUNCERS:

Dave Trotter, IN  
Tyler Lobdell, IL

#### PHOTOGRAPHER:

Emily Adcock, IL

# Rocky Mountain Katahdin Association Annual Educational Meeting Set for June 19-20, 2025

By Babette Fief

The Rocky Mountain Katahdin Association will hold their annual educational meeting on June 19th and 20th this year. Host of this year's event is the USDA-ARS Livestock and Range Research Laboratory.

Topics regarding:

- Selection models for enhanced EBVs
- Nutrition for embryonic development

- Rotational grazing intensity
- Controlled burns to reduce Russian olive presence
- We are still working on one more.

The meeting will be held at the beautiful Fairbridge Inn and Suites in Miles City, Montana. They offer a special discount to those who are attending the meeting who call them direct and mention you are attending the Rocky Mountain Katahdin Association meeting. This discount is

available until all rooms are reserved. You can call them at 406-232-3661 to make your hotel reservation.

If you aren't a member of Rocky Mountain Katahdin Association it's not a problem. Perhaps after attending, you'd like to join us. If you'd like to know more about the meeting you can call one of our officers listed in the Regional Groups section, page 55 of this Hairald.

## The KHSI 2025 Photo Contest is Now Open!



Entries must be received by November 1, 2025

- First Place: \$50 credit to be used with KHSI Registry
- Second Place: \$25 credit to be used with KHSI Registry
- Third Place: \$10 credit to be used with KHSI Registry



Entries can be posted at:

<https://katahdins.org/programs/photo-contest/>

MRS

## FLAT CREEK RANCH

MRS

Huge thanks to Laban & Meg Graber for allowing me to purchase the Daffodil Valley flock including a number of "King Chrome" daughters. All ewes have been exposed to BAG 4563 "Red Wave".



BAG 4563 "Red Wave"

Owned by Gingerich Family Katahdins

Expecting 80+ Spring Lambs sired by:  
GFS 23334 "Jackpot"  
TRB 1584 "New Chrome"  
BAG 4563 "Red Wave"

*Good luck to everyone with spring lambing and hope to see y'all at sales next summer!*

*Visitors Always Welcome!*

**Bentley Martin**  
**434-554-2689**  
Long Island, VA  
[bwmfarming@gmail.com](mailto:bwmfarming@gmail.com)

BAG

BAG

# BUCKEYE ACRES ELITE STUDS



BA 4503



BA 4802



BA 4823



These three Elite Studs pictured above sold in our 2024 online sales! We will be offering similar Elite Genetics in our 2025 online sales.



**Buckeye Acres is committed to producing Fast Growing, Muscular Katahdins with Structured Soundness and Eye Appeal backed by NSIP Data!**

**Please Join Us for 2 Sales.  
Tuesday, May 20, 2025  
Wednesday June 4, 2025**

hosted by Integrity Livestock Sales

<https://www.integritylivestocksales.com/>



**Farm Visitors and Sales are Always Welcome!**



Member  
NSIP

**[www.buckeyeacres.com](http://www.buckeyeacres.com)**

Ron and Carla Young  
Van Wert, OH 45891

419-203-6389  
[roncyoung@gmail.com](mailto:roncyoung@gmail.com)

# KHSI MEMBERSHIP DONATIONS TO SUPPORT YOUTH ACTIVITIES

Forty-six KHSI members have donated a total of \$2,604 to support this year's KHSI Youth Activities. These include the following:

- All American Junior Sheep Show
- Katahdin Youth Sheep Show
- KHSI Youth Scholarship fund

*Please say thanks to the following contributors!*

Hymel Farms - Johnathan Hymel  
 Lauden Acres - Lynn  
 Laudenslager  
 Scio Farms 226 LLC - Melanie Fearnside  
 Duane Mohr  
 Aslin Katahdins - Cody & Luke Aslin  
 Wicked Sisters Ranch - Greg Vanzant  
 Dogwood Ridge Farm  
 Weber Farms - Brendan Weber  
 Quarter Penny Farms  
 A & G Becker Farm  
 Mrozinski - Bailey, John & Eleanor  
 WNJ Katahdins - William Jacobsen  
 Delana Nolan  
 Kilburn Farms - Caleb Kilburn



E & R Farms - Rachel & Eugene Somers  
 Brokaw Farm Katahdins - Lee Brokaw  
 Misty Oaks Farm - Jeff & Kathy Bielek  
 Rock Ridge Ranch - Adam Kilmer  
 EBH Plantation - Jon Hall & Leslie Burke  
 Poynter Sheep Farm - Jeff & Jan Poynter  
 Dogwood Trails Farm - Kathleen Bylinowski  
 Corn Creek Katahdins  
 G-5 Farm/DHG Katahdin - David Gordon

Country Oak Ranch  
 Prairie Lane Farm - Henry & Becky Shultz  
 Dyer Family Katahdins - John, Judy & Scott  
 Breezy Knoll Katahdins  
 Francis Family Farms - Britton, Brant & Aly  
 Gleaves Farm - David L Gleaves  
 Indigo Valley Farm - Jeff & Debbie Joines  
 Arkansas Road Katahdins - Roger Kratzer  
 Ewe Lamb Right Farm LLC - Dan Turner  
 Haskins Katahdin Sheep Farm  
 Luzon Farm - Markway & DeOrnellis  
 Round Mountain Farm  
 McKinzie Farms  
 Legacy Farm - Matt & Savannah Webb  
 Quixote Clay Farm - Thane Sheetz  
 Harrogate West - Jaclyn Yench  
 Mullet Katahdins - John J Mullet  
 Shepherds Hill Farm

CONTINUED ON PAGE 18



717-222-4030  
brishar1216@gmail.com

## A Little About Us!

Pasture based genetics!  
 Selecting for Growth and Easy Care on pasture; along with Prolificy!  
 OPP + CL + JOHNES Negative Flock

Started in 2019 with Commercial ewes  
 2020 we started upgrading our flock to registered stock.

Joined NSIP in 2022 and we have 2 years of data with that.



## First Time Lamber

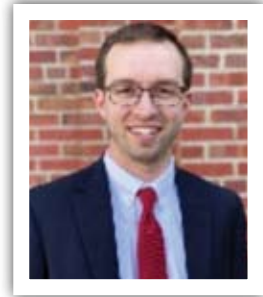



**KHSI MEMBERSHIP DONATIONS,  
CONTINUED FROM PAGE 17**

Sunset Pines Farm - Valerie Daley  
Kevin Stewart Katahdins - Kevin Stewart

*Thank You for  
Supporting  
our Youth!*

**KHSI Members  
in the News!  
Dr. Andrew Weaver**



*Andrew Weaver,  
North Carolina State  
University*

**OUTSTANDING EARLY CAREER ANIMAL  
SCIENTIST AWARD - EDUCATION**

Dr. Andrew Weaver earned his degrees in Animal Science from Michigan State University (B.S.), and Virginia Tech (M.S.) and his Ph.D. in Animal and Food Science from

CONTINUED ON PAGE 20

*AM Star* 2 Peter 1:19  
**KATAHDINS**

**Quality  
Registered and  
Commercial  
stock Available**

**VISITORS  
WELCOME**

Roger & Lisa Garland  
Vevay, IN 47043  
812-599-3930 • 812-599-7454

**CEDAR CREEK  
FARM**  
GEORGETOWN, TN

*Registered  
Katahdins  
Since 2007*

**NSIP**  
National Sheep  
Improvement  
PROGRAM

Michael Stumpff  
423-505-4274  
mstumpff@yahoo.com

# KRK KATAHDINS *"Production sheep that show well"*

**Looking for parasite resistance? Strong maternal traits?  
Ewes that wean a lot of pounds of lamb? Feet that don't require trimming?  
More rear end muscling? Longevity?  
*"Building Sheep that Buyers Love"***



6400682017KRK377's Yearling Daughters raising twins.

**125 Registered Katahdin ewes.**



**"Two each of these natural fall ewe and ram lambs heading to the Western Hair Sheep Sale at the Nugget in Sparks NV May 30-31st"**

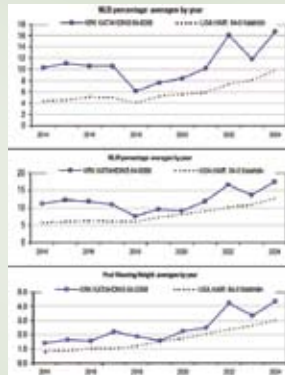


Ewes with solid, thick meat conformation, mothering, milk well on grass

**We do lambs on grass**



**Grass/Forage Based Management System**



6400312019BCH973

6400312019BCH973, my new well balanced ram with high accuracies, 129 offspring. MWWT in the top 99%. Good conformation.



6400682022KRK836

6400682022KRK836, RR TMEM 3,4. Thick, muscled, stays fat on just pasture; Top 97% Index WWT 96%, PWWT 99%, NLB and NLW 98%. Sire 6400612020USD102.



Member  
NSIP  
OPP neg



**KRK Katahdins**

Hubbard, Oregon • 503-351-6978

krkenagy@hotmail.com • www.krkkatahdins.com



Join us on  
Facebook.  
KRK Katahdins



**2025 Dr. Leroy Boyd  
Katahdin Jr. Show**  
Thursday, June 12 - Midwest Stud Ram Sale  
Sedalia, MO  
Judge: Maclyn Musick

**KHSI MEMBERS IN THE NEWS! DR. ANDREW WEAVER, CONTINUED FROM PAGE 18**

West Virginia University. Dr. Weaver joined the Animal Science Faculty at NC State University to teach livestock management courses and serve as the state's Small Ruminant Extension Specialist. Dr. Weaver's teaching and extension programs go hand in hand as challenges faced by the industry need to be understood and addressed by not only producers but also new graduates. Dr. Weaver's extension program focuses on improving genetic selection and grazing systems for small ruminants through precision livestock technologies to maximize profitability of production systems. Dr. Weaver's accomplishments in his short career include authored/co-authored 29 peer-reviewed manuscripts and popular press publications, over 50 invited presentations, 45 peer-reviewed abstracts, and secured more than 1.3 million dollars in funding.

**NEED TO KNOW WHAT'S HAPPENING? CHECK OUT THE FOCUS ON EWETH CALENDAR PAGE 30**

**KHSI 717-335-8280**

**Generations of selection for:**  
- Maternal Ability  
- Fertility  
- Parasite Resistance

**KATAHDIN HAIR SHEEP**

**NSIP**  
National Sheep Improvement Program  
Member NSIP

**BREEDING FUNCTIONAL KATAHDINS SINCE 1992**

**BoNus Angus Farm**

**Bob & Amanda Nusbaum**  
6373 Red Dog Rd.  
Potosi, WI 53820  
608-348-3284 or 608-778-3140  
nusbaum@uwplatt.edu

**CANEY CREEK FARMS**

**2025 lambs are available starting in June**

**Reserve yours TODAY!**

Join us on Facebook.  
Caney Creek Farms Katahdins

**Dwayne & Kathy Kieffer**  
4864 Smiley Rd.,  
Chapel Hill, TN 37034  
931-703-0239 • 931-580-6909  
caneycreekfm@united.net

**pick TENNESSEE**

# Composting Dead Sheep

By David L. Greene  
Sheep farmer and retired county  
extension agent  
White Hall, Maryland

Since renderers no longer pick up and dispose of sheep, producers have few options in the disposal of sheep and sheep products. Because of the concerns over groundwater pollution, burying sheep is not practical or recommended in most cases. Incineration is the best alternative, but is very costly, therefore not very practical for small and mid-size sheep producers.

Composting is a recycling process where bacteria and fungi decompose organic material in an aerobic (oxygen present) environment. Organic wastes, in this case dead sheep, are transformed by bacteria into a soil-like material similar to humus.

The composting process generally occurs in two stages: primary and secondary. During the primary stage, a higher rate of biological activity results in rapid composting and higher temperatures in the bin. Conversely, the secondary stage has lower biological activity resulting in lower temperatures.

In composting, the material mix is very important. The mix requires the proper balance of carbon and nitrogen. When this balance occurs along with adequate levels of air and water, the composting process results in nearly complete disposal of dead sheep with little odor and runoff. A carbon to nitrogen ratio of 25 to 1 is best, with the sheep supplying most of the nitrogen.



CONTINUED ON PAGE 22

**REED'S FAMILY FARM**  
Frenchburg, KY

reedsfamilyfarm@outlook.com  
<https://www.reedsfamilyfarm.com/>  
859-274-6319

**Call NOW to reserve  
your Spring Lambs!**



**859-274-6319**



Facebook:  
Reed's  
Family Farm

The concentration of oxygen in the mixture is very important. Air is trapped in the material used for composting. As the bacteria multiply, oxygen is used up and additional oxygen must be re-supplied for the composting process to be successful. Turning or mixing the pile after the process slows down will add oxygen and help it to restart the composting process.

The carbon source is also very important in allowing air penetration and holding moisture in the pile. Green (undried) sawdust has been the carbon source of choice in large animal composting. Wood chips will work also, but more attention must be given to monitoring the pile to be certain the correct moisture is present, as chips tend to dry out faster than sawdust. To encourage bacterial growth and rapid composting, the mixture must be 50-60 percent moisture. If a handful feels moist, but no water can be squeezed from it, the mixture is probably okay.

Monitoring the process with a three

foot composting thermometer (which can be purchased in most garden supply stores) will show if the pile is heating up properly. When the temperature of the pile declines below 100 F, adding water and stirring to provide oxygen should cause the pile to heat up again. When temperatures remain above 130 F for three consecutive days, disease-causing pathogens within the pile will be destroyed.

After the composting process has completed, usually in 6-8 weeks for active composting and 15 to 20 weeks for inactive, the material can be spread over pastures and crop fields. A good time to clean out the composter is when the manure is hauled from the barn. A manure spreader does a good job of breaking up some of the larger bones that may not be fully decomposed.

**HOW TO GET STARTED**

Usually only one bin will be needed for most flocks under 25 to 30 ewes. Bins should be at least six (6) square feet and possibly eight (8) square feet for larger breeds. Do not build bins

larger than necessary since larger bins require more carbon material (sawdust, chips, manure etc.). The boards on the sides of the bin should have gaps of one-half to three-fourths inches (1/2 to 3/4) for proper airflow. Bins should be located close to buildings and a water source, but not in direct contact with the flock. A roof over the bins is recommended, but is not necessary if a tarp can be used during periods of excessive rainfall.

Larger flocks will require two bins. Dead lambs, afterbirth, or material returned from the butchering process can all be composted by this method as well. Begin with at least one (1) foot of sawdust in the bin before placing in the dead animal. Situate the carcass so that at least a foot of carbon material (sawdust in this case) is between the animal and the bin sides. Cover the carcass with one and a half feet of material and monitor every few days. Recent research has indicated that a 120 lb. carcass will require about twelve (12) cubic feet of sawdust.

CONTINUED ON PAGE 23



**CEK 318 TR RR**

S: RIV 937 (207M)  
D: RIV 956 (735) "First Lady"  
Dam Was the First ever Supreme Champion Katahdin Ewe at NAILE, Owned with R&B Farm - Ohio



**RIV 974 (819)  
"Party Mode"**

S: RIV 897 (13) "NEW GENES"  
D: RIV 819 (30)  
NSIP# 6402622021210974



**Luzon Farm 1756  
"Stolen Goods"**

S: LUZ 1124 "Captain"  
D: BB 565  
NSIP# 6402542022LF1756



**FRA 8170 SG RR**

MWSRS Jr Champion Ram  
1st March Ram Lamb  
S: SRS 480 "Power Drive"  
D: DOC P2364  
We really like what "Drive Train" and now his son "Power Drive" are doing as studs and this cross on a Doc ewe is no exception

We plan to consign  
6400312020BCJ036 as a proven ram  
at the EAPK Sale July 12th.

We are done lambing and have  
an exciting group of lambs out  
of these rams and BC J036-22.

# The Ulrys

Daniel, Marta, Floyd, Eustace, Orville, Mildred, Millicent, & Cecil

66054 Neilley Lane, Cambridge, Ohio

Daniel's Cell: 614-361-0884

Email: Ulryfarms@gmail.com • ulryfarms.com

**KHSI Prefix ULR Y**

**NSIP Flock# 240262**



(800) 788-4709  
this Post IS the Insulator!  
www.timelessfencesystem.com

White Gates Fencing Supply LLC  
Daniel Ulry  
66054 Neilley Lane  
Cambridge, OH 43125  
Phone: 614-361-0884  
E-mail: ulryf@buckeyemail.osu.edu

Authorized Reseller



FIND US ON FACEBOOK:  
**ULRYFARMSLLC**







# Things to Consider When Buying or Selling Katahdins

By Alan  
Culham  
- KHSI  
Operations  
Director

Reprinted  
from the Fall  
2023 Katahdin  
Hairald

Lately I have received several calls and observed various social media posts about issues that have occurred between buyers and sellers of Katahdins with the desire of involving our office in litigating their dispute. Often the problem is lack of communication between the parties on what the expectations are of the animals involved in the transaction.

## REGISTRATION AND TRANSFER

Just because an animal has registered parents does not mean the resulting offspring are registered, but are eligible to be registered. If you as a buyer want them to be registered it must be communicated to the seller that it is your expectation that they be.

Also this would involve that ownership be transferred to the buyer. The cost of this could be an additional 8 to 32 dollars per head depending on the animal's age and if the animal is transferred within 60 days from date of sale. Make sure that this is discussed with those expectations listed on the bill of sale and who is to pay the cost.

The same can apply to a registered animal, just because they have papers does not mean they are selling with papers. Discuss this at time of sale and list on the bill of sale your expectations.

## HEALTH AND WELL BEING

Sale of sheep across state lines requires an interstate certificate of veterinary inspection. This gives the purchaser some assurance that the animals were free from communicable and infectious disease at the time that they were inspected. Other than that it is a buyer beware situation.

Additional tests for other diseases or genetic conditions that you require need to be discussed prior to purchase

and made part of the purchase agreement. Complaints after the fact make KHSI powerless in the resolution of the situation. Sheep purchased out of consignment sales need to meet the health requirements of that sale. Any requirements a purchaser requires beyond that need to be satisfied prior to purchase in a sale. Requirements and testing after purchase are at the buyer's risk.

## ANIMALS AS BREEDERS

The standard sale guarantee of the purebred sheep industry reads something like this:

Animals are guaranteed to be breeders if properly handled. A string of shows is not considered as proper handling for the initial breeding season.

If a ram fails to breed the seller has the right to check the animal in question with a breeding soundness exam administered by a veterinarian. If he passes he is considered a breeder no refund or replacement is required.

CONTINUED ON PAGE 31

## COMPOSTING DEAD SHEEP, CONTINUED FROM PAGE 22

Personal experience over the last four years has shown this process works well, is a labor saver, is low in cost, has little odor, does not promote the growth of flies or other annoying insects and is environmentally friendly.

For more information, Contact NRAES <http://www.nraes.org> or 607/255-7654) to purchase "Field Guide to On-Farm Composting" for \$14.

This article was written in 2009 by David L. Greene.  
© 2025 Maryland Small Ruminant Page.

PHILLIPS FAMILY  
Farmstead

We Offer...  
Reg. Breeding Stock  
Bred for Production  
NSIP Members

WASHINGTON, PA  
EST. 2004  
BECKY + KEN PHILLIPS  
(724) 809-1821  
pffarmstead@gmail.com  
phillipsfamilyfarmsteadpa.com

Find us on Facebook

**SMOHALLA ACRES** **RHO**

Tim Rhodes  
Salem, Ohio  
Ph: (614) 937-9773  
Email: [SmohallaAcres@yahoo.com](mailto:SmohallaAcres@yahoo.com)

Find us on Facebook!  
Smohalla Acres

All rams RR **JDK**

Striving to Raise  
Superior  
Katahdins

**DYER FAMILY KATAHDINS**  
Chrisney, IN  
812-457-0320

John, Judy & Scott Dyer [jdkatahdins@Reagan.com](mailto:jdkatahdins@Reagan.com)



RED HAUTE GENES



BUILT FOR GROWTH



BREEDING EXCELLENCE

## At Thousand Oaks Ranch, we believe in raising sheep that excel in real-world conditions. Our breeding program is built on:

- **Balanced, multi-trait selection** with a strong emphasis on maternal excellence, efficiency and longevity.
- **Sheep that thrive in forage-based systems**, ensuring they perform in any environment while producing profitable, productive offspring.
- **Superior genetics**—our ewes consistently raise exceptional lambs with strong growth, structural soundness and proven maternal traits.
- **Purposeful selection** to maintain only the most efficient and functional sheep in our program.



Kevin & Toni Beatty  
 417.437.4523  
 kbeatty@hushmail.com  
 Carl Junction, MO  
[www.ThousandOaksRanch.net](http://www.ThousandOaksRanch.net)



CUSTOMER DRIVEN ~ INDUSTRY FOCUSED ~ PROFIT PROVEN



# What a GREAT way to reintroduce JULIAN AND MOORE SHEEP COMPANY



**2024  
NATIONAL  
CHAMPION  
RAM**

**Julian and Moore 307  
"Power Train"  
sired by "Drive Train"**



**2024  
NATIONAL  
CHAMPION  
EWE**

**SRS Salmon Run 755  
"Grace"  
sired by "Drive Train"**

Our flock started several years ago as Julian and Moore Katahdins. We were very fortunate to have our genetics recognized at the top, both nationally and internationally. Leslie Raber at Salmon Run Farms purchased our flock in 2018 when Helen and I decided to retire. I maintained a close working relationship with Leslie's flock as she took it to higher levels of success. When Leslie decided to pursue other interests, she allowed my family the opportunity to acquire a very special group of her ewes to reestablish the next generation of Julian and Moore Sheep Company Katahdins in 2023-24.

My son Adam, his wife Jessica, and their daughters Audrey, Lauren and Vivian are the next generation at Julian and Moore Sheep Company Katahdins. Their goal is to maintain and further grow the quality of their Katahdins. My role will be to support and assist in their efforts.

Ed Julian



**✧ Champion Bred Rams and Ewes Available Privately  
✧ Consigning to the Midwest Stud Ram Sale**

## JULIAN and MOORE Sheep Company

*The Julian Family*

Mantua, OH 44266

330-931-2986 • ejulian781@gmail.com



Join us on  
Facebook.  
Julian and Moore  
Sheep Company

# NSIP Katahdin Percentile Report March 2025

Percentile	BWT	MWWT	WWT	PWWT	PFAT	PEMD	WFEC	PFEC	PSC	NLB	NLW	US Hair Index	YWT	HWT	MBWT	SRC\$ Index
100	0.97	2.99	5.21	9.42	-2.49	2.78	-99.79	-100.27	0	0.45	0.39	107.28	9.12	0	0.8	138.94
99	0.68	1.86	3.75	7.06	-1.36	1.6	-93.96	-98.74	0	0.32	0.29	105.9	6.8	0	0.59	132.7
98	0.62	1.72	3.56	6.57	-1.04	1.41	-91.14	-97.32	0	0.28	0.27	105.53	6.25	0	0.54	130.85
97	0.59	1.64	3.41	6.26	-0.92	1.23	-88.27	-95.54	0	0.26	0.26	105.27	5.89	0	0.52	129.55
96	0.57	1.57	3.31	5.99	-0.84	1.16	-86.53	-94.21	0	0.24	0.24	105.09	5.67	0	0.49	128.71
95	0.54	1.53	3.2	5.81	-0.79	1.08	-84.88	-92.7	0	0.23	0.24	104.96	5.49	0	0.47	128.01
90	0.48	1.33	2.85	5.16	-0.53	0.77	-78.22	-85.3	0	0.19	0.21	104.48	4.69	0	0.4	125.54
85	0.43	1.2	2.64	4.76	-0.38	0.6	-71.4	-78.83	0	0.17	0.19	104.17	4.14	0	0.35	123.94
80	0.4	1.09	2.48	4.43	-0.26	0.48	-65.53	-72.66	0	0.16	0.18	103.91	3.78	0	0.31	122.6
75	0.36	1	2.33	4.17	-0.14	0.39	-59.78	-67.03	0	0.14	0.17	103.71	3.44	0	0.28	121.36
70	0.34	0.92	2.21	3.93	-0.05	0.3	-54.64	-61.66	0	0.13	0.15	103.54	3.11	0	0.25	120.28
60	0.28	0.77	1.98	3.48	0.08	0.14	-45.79	-50.16	0	0.11	0.14	103.23	2.56	0	0.19	118.49
50	0.23	0.62	1.77	3.08	0.26	0	-36.87	-38.74	0	0.09	0.12	102.91	2	0	0.14	116.88
40	0.18	0.45	1.55	2.68	0.47	-0.01	-27	-26.07	0	0.07	0.11	102.57	1.38	0	0.08	115.16
30	0.12	0.23	1.31	2.24	0.71	-0.19	-16.26	-11.68	0	0.05	0.09	102.25	0.27	0	0.03	113.41
20	0.05	0	1.02	1.72	0.96	-0.38	-2.75	0	0	0.03	0.07	101.79	0	0	0	111.05
10	-0.05	0	0.58	0.96	1.37	-0.7	13.52	29.41	0	0	0.04	101.1	0	0	-0.08	107.64
0	-0.65	-1.22	-2.16	-3.8	4.26	-2.25	328.36	298.19	0	-0.24	-0.12	98.41	-4.41	0	-0.65	93.02
Units	kg	kg	kg	kg	mm	mm	%	%	cm	%	%		kg	kg	kg	
Number of Lambs	8679	8679	8679	8679	2154	2154	4975	4975	0	8625	8625	8679	8679	0	8679	8477

Category	Count
Total Katahdin Records	137106
2024-2025 Born Lambs	10073
2024-2025 Lambs with Linkages	9936
2024-2025 Born Ram Lambs	4947
2024-2025 Born Ewe Lambs	5126

**America's**  
GENETIC FOUNDATION  
FOR A PROFITABLE



**Be sure to check the Bulletin Board on pages 29-30 for Important Dates, upcoming Katahdin Sales, Educational Events, and Youth Events.**

**Big Tom's Con-O-Creek Farm**

On Farm Consultations

Big Tom Perkins  
125 Perkins Lane  
Fombell, PA 16123  
bigtomperkins@gmail.com  
724-480-5187

Registered Katahdin  
Sheep Sales

**CIRCLE B FARM**  
Quality Seed Stock  
Quantified  
Performance  
Solid Genetics

**CIRCLE B FARM**  
KATAHDIN  
EST. 2011

NSIP  
KATAHDIN  
CSIA

23321 OXFORD ROAD  
QUAKER CITY, OH 43773  
BRIAN & MARGARET BUCK / (740) 680-8478



# Message From TexKat's President

I attended the Special Replacement Sheep and Goat Sale in San Angelo, TX this past weekend. It is an annual sale for replacement breeding stock only. There were a few bucks sold but almost exclusively breeding ewes and nanny goats.

Approximately 1200 head of ewes sold ranging in age from big ewe lambs to full blown yearlings. The common practice in the big ranching country is to leave bucks out year around so probably a big percentage of the ewes were bred unless they had been managed to be open for this sale. Ewes needed to weigh 80-90 lbs plus to sell well. That is basically saying they need to be ready to be bred if they are not already bred. Lighter weight ewe lambs just have no place here.

The overall average on the sale was \$359/ head. All animals sold by the head. There were 16 sellers with lot sizes from 20 head to 360 head. There was one lot of 80 head of com-

mercial Katahdin ewe lambs, bred, weighing 90 lbs. that brought \$365/ head. One well known breeder had 58 head of 3/4 Dorper, 1/4 Katahdin that weighed 125 lbs. and were bred to well-known white dorper bucks to start lambing the first of April. They sold for \$410/ head. {top end of sale}. There were two lots of half Katahdin half Dorper that averaged \$350 per head. These sheep weighed 110 lbs. The balance of the sale was made up of Dorper cross, and Royal White ewes. There were three volume buyers, I was told by the sale management they were all buying for solar farms. There is practically no forage in West Texas due to drought and these sheep were all bought to be moved away - probably the I-35 corridor or farther east.

The best news was the Katahdin name was being thrown around. I have never heard that or seen it advertised here in West Texas. I sold the bucks that sired some of these half breed ewe lambs, and they came from a couple of reputable breeders

which will be the best advertising we can have. Word of mouth trumps all other forms of advertising. In both cases these were white Dorper breeders looking to upgrade their Dorper sheep with some better traits.

The Dorpers have plenty of problems including fertility problems, skin problems, feet problems, parasite problems especially in the black heads, and too much wool on many of them. One solar farm person told me he can have no sheep with any wool because there are some areas with machinery his sheep can interfere with if they have wool.

There is a rule of thumb in the cattle business that a young brood cow is worth the price of two weaning calves. That has held true for decades. It would appear the breeding ewes are falling into that same category. Market lambs today are \$175 to \$200/head. Double that is \$350 to \$400 .

Bill M. Brown

Texas Katahdin Hair Sheep Association President



Sale to be Broadcast Live with Online Bidding by:



## Expecting 70-80 Head of Katahdins - MAY 8-9, 2025 Darke County Fairgrounds, GREENVILLE, OHIO

7 National Breed Sales - 3 Regional Breed Sales  
In conjunction with the Ohio Showcase Sale

Check our website for Information and Catalog

SHOW SCHEDULE	
Thursday, May 8 – Cattle Pavilion – 9:00 a.m.	
(RING 2) – Judge: Ed Julian, OH	
Katahdins will show at approx. 12:00	
The Show will be broadcast Live on YouTube – Check our web site for details.	
SALE SCHEDULE	
Friday, May 9 – Swine Building – 9:00 a.m.	
Katahdins will sell at approx. 12:00 (estimated time)	



Pat: 937-935-1975 Gary: 937-597-7214  
Dan: 937-243-5111 Jim: 937-658-3119

[www.selectls.net](http://www.selectls.net)

# LAUDEN ACRES

## *Katahdins*

**ATTENTION! 2025 SALE SHEEP BY "LONG GENES" & "SMOKING GUN"**



**YEARLING RAM - MIDWEST**



**FALL RAM - MIDWEST**

**We will be sending  
3 Fall Ewe Lambs to  
the Ohio Showcase  
Sale and 3 Fall  
Ewe Lambs to the  
Midwest Stud Ram  
Sale, Sedalia**



**YEARLING EWES**

### **SPECIAL NOTICE!**

**Quality Fall Ewe and Ram Lambs FOR SALE  
at the farm. Don't hesitate to give us a call!**

***We currently plan  
to attend in 2025:***

***Ohio Showcase Sale  
Midwest Stud Ram Sale***

#### **Shepherd:**

**Marshall Koppenhaver  
570-850-7112 (cell)**

**Lynn A Laudenslager**



*Division of  
Mahantongo Game Farms  
Established 1935*

#### **Mahantongo Game Farms**

**559 Flying Eagle Road  
Dalmatia, PA 17017**

**marshall@pagamebirds.com**

## Important Dates

- May 9-10, 2025** Texas Sheep Field Day and Private Treaty Sale. Gatesville, TX
- May 30-31, 2025** South Central Katahdin Association (SCKA) Annual Gathering and Private Treaty Sale, New Albany, MS
- July 1, 2025** KHSI Youth Scholarship Application Deadline
- July 11-12, 2025** Eastern Alliance for Production Katahdins Symposium and Sale, Elizabethtown, KY
- July 31-Aug. 2, 2025** Katahdin Expo & Sale – Vanderburg 4-H Center – Evansville, IN
- August 15-16, 2025** 4th Annual Coalfield Sheep Association Educational Evening and Sale. Coalfield Agricultural Center 449 Agricultural Drive, Clintwood, VA 24228
- November 1, 2025** Photo Contest submission deadline

## 2025 Hairald Publication Dates

Hairald Publication Dates & Advertising Deadlines. Page 5

## Katahdin Sale Roundup

- May 8-9 2025** – Ohio Showcase Show and Sale. Greenville, OH
- May 9-10 2025** – Texas Sheep Field Day and Private Treaty Sale. Gatesville, TX
- May 30<sup>th</sup> & 31<sup>st</sup>, 2025** – South Central Katahdin Association (SCKA) Annual Gathering and Private Treaty Sale, New Albany, MS
- June 9-14th, 2025-** Midwest Stud Ram Sale – Missouri State Fairgrounds Sedalia, MO
- July 11 & 12, 2025** – Eastern Alliance for Production Katahdins Symposium and Sale, Elizabethtown, KY.
- July 31 – August 2, 2025** – Katahdin Expo – Vanderburg 4-H Center – Evansville, IN

*KHSI posts information on sheep sales and events as a service. Posting sale and event information does not imply endorsement or verification of the claims of any sale or event. KHSI encourages the use of performance records and production data as the primary means of selecting and ranking sheep. Sales and events posted are not sanctioned by KHSI unless otherwise noted.*

*Contact the KHSI Operations Office to ask for your sale or event to be posted. 717-335-8280 ext 1 or [info@katahdins.org](mailto:info@katahdins.org). Check for updates on the KHSI Facebook page and the calendar page of <https://katahdins.org>*

**See Table of Contents (page 4)**

# Lines, Dates and Notes

## Focus on Eweth Calendar

June 12, 2025 – 2025 Dr. Leroy Boyd Katahdin Junior Show, Midwest Stud Ram Sale, Sedalia, MO

July 1, 2025 – KHSI Youth Scholarship Application Deadline

July 3 – 6, 2025 – All American Junior Sheep Show – Illinois State Fairgrounds – Springfield, IL

## Educational Events Calendar

May 9-10 2025 – Texas Sheep Field Day and Private Treaty Sale. Gatesville, TX

May 30<sup>th</sup> & 31<sup>st</sup>, 2025 – South Central Katahdin Association (SCKA) Annual Gathering and Private Treaty Sale, New Albany, MS. See article on page 13 for more information.

June 19-20, 2025 – Rocky Mountain Katahdin Association Annual Educational Meeting, USDA-ARS Livestock and Range Research Laboratory facility, Miles City, MT. See the article on page 15 for more information.

July 11 & 12, 2025 – Eastern Alliance for Production Katahdins Symposium and Sale, Elizabethtown, KY.

July 31 – August 2, 2025 – Katahdin Expo – Vanderburg 4-H Center – Evansville, IN

August 15, 2025 – 4th Annual Coalfield Sheep Association Educational Evening, 6 p.m. Coalfield Agricultural Center, 449 Agricultural Drive, Clintwood VA. 24228

## ATTENTION

*All events listed on this page have not been canceled at the time of printing. Please check websites or call for the latest information on status of events*

“Easter Lily Lambs on Franklin Ridge” – Holly Hyder - IN  
Open Division 2024 KHSI Photo Contest

for articles on Coming Events

If he fails the seller has the right to refund the full purchase price or replace it with a ram of equal value to the satisfaction of the buyer. If a ram does not breed it is the purchaser's responsibility to insure a lambcrop by introducing a "check ram" after the initial ram is removed. The seller of a nonbreeding ram cannot be held responsible for a lack of lambcrop.

In the case of a ewe the seller can take the ewe and attempt to get her bred. If successful the resulting bred ewe is returned to the purchaser. If not seller has the right to refund the full purchase price or replace it with a ewe of equal value to the satisfaction of the buyer.

If a ewe is sold as bred and fails to lamb it is generally accepted that 20% of the purchase price be refunded. Once again the designation of "bred" needs to be listed on the bill of sale.

With pregnancy testing technology, a positive pregnancy check can act as proof of the ewe being bred at time of sale and remove the seller from any responsibility after that time.

**NSIP DATA**

NSIP (National Sheep Improvement Program) data is a tool to be used by the buyer to select animals that are purchased. If is not available at time of selection getting it later is of little value to you. NSIP EBVs change as more data is obtained. The purchaser needs to expect this as a common occurrence and should not expect refunds or compensation for such.

**ONLINE SALES**

Read the sale warranty. Most online sales have very limited warranties. Communicate with the consignor prior to purchasing an animal online if you expect warranties beyond the sale

standard and get it in writing prior to making the purchase.

**SUMMARY**

Each transaction between buyer and seller is unique to that sale. Record the conditions and expectations of the sale on the purchase agreement. This protects both parties and can be used to help KHSI resolve the situation if need be. Also both parties need to treat the other as they would expect to be treated if the situation were reversed.

As a seller you need to strive to "keep the customer satisfied". Going the extra mile can go a long way in building a reputation as a reputable breeder. The buyer also needs to do some homework. Ask around about the breeder that you are considering investing in their breeding stock. Ultimately it is always buyers beware!

**For a listing of the Regional Katahdin Groups, see page 55.**

Balanced EBVs focused on

- parasite resistance
- total pounds of lamb weaned per ewe
- growth on pasture

**MISTY OAKS FARM**  
Forage Based Production

Jeff & Kathy Bielek  
Wooster, OH • 330-621-2612 (c)  
kathy.bielek@gmail.com  
www.mistyoakskatahdins.com

**THIS BUSINESS CARD  
AD SPACE CAN BE  
YOURS!  
SEE PAGE 5 FOR INFORMATION**

**See Me at the Expo**

*I've been saving this one for my inaugural trip to the Expo.*

**A "Royal Genes" on a top Sturdy Post "Social Distance" ewe.**

**Ram Lambs and Ewes available.  
Give us a Call TODAY.**

**HALL**

**Make my kind your kind**

John Hall - Chestertown, MD • 410-708-8781  
jehgrain@gmail.com



**"Silver Lux"**

*"Silver Gene's" daughter  
She will be one of our highlights  
entered in the 2025 MWSRS*

This ewe lamb is a great example of "Silver Gene's" offspring. If you want one to show all summer and then take to NAILE this fall, this lamb will make you happy.



**"Red Haute Genes"**

*"Silver Gene's" son. Sold  
to Kevin and Toni Beatty of  
Thousand Oaks Ranch"*

This ram lamb is another great example of "Silver Gene's" offspring. He is extremely powerful in all ways. Can't wait to see the offspring out of him.



**"Silver Gene"**

*Stud Ram at Rack of Lamb Corral.*

We plan to cut our flock back to 25 of our very best ewes. We will be offering sheep that normally would never leave the ranch. We are proud to invite Kevin and Toni Beatty of Thousand Oaks Ranch that will also offer some of their genetics in our 13th annual online sale with Willoughby Livestock Sales. Two Big Days, May 18th and May 25th 2025



**MARK YOUR  
CALENDAR**  
Willoughby Livestock Sales  
[www.wlivestock.com](http://www.wlivestock.com)



**RAM POWER + EWE POWER = LAMB POWER**

**A Dream Flock Built From Champions**

# Katahdin Hair Sheep International Balance Sheet as of December 31, 2024

Dec 31, 24

ASSETS	
Current Assets	
Checking/Savings	
Bennington Checking	
Restricted Funds	
All American Junior Show	658.00
GEMS Research Account	11,040.00
KHSI Show Committee	3,451.48
NAILE Open & Sedalia %	4,978.38
Youth Scholarship Donations	-122.62
Youth Show Donations	<u>-266.98</u>
Total Restricted Funds	19,738.26
Bennington Checking - Other	<u>12,409.11</u>
Total Bennington Checking	32,147.37
Bennington Custodial Acct	5,111.02
KHSI Credit Card	790.11
PayPal	<u>2,986.73</u>
Total Checking/Savings	41,035.23
Accounts Receivable	
Accounts Receivable	<u>-522.61</u>
Total Accounts Receivable	-522.61

CONTINUED ON PAGE 34

**GRANDPA'S FARM KATAHDINS**  
**3RD ANNUAL**  
**BRED FOR EXCELLENCE**  
**ONLINE SALE**  
**JUNE 2ND, 2025**  
**YEARLINGS, FALL BORN, AND SPRING BORN LAMBS**  
**BREEDING FOR TOP PERFORMING MATERNAL LINES**  
**Grandpasfarm22@yahoo.com**  
**Follow us on Facebook at Grandpasfarmkatahdins**

Other Current Assets	
Martson Law Retainer	143.50
Registry accounts receivable	2,166.71
Undeposited Funds	70.00
Total Other Current Assets	<u>2,380.21</u>
Total Current Assets	42,892.83
Other Assets	
KHSI Investment CDs	263,958.99
Total Other Assets	<u>263,958.99</u>
<b>TOTAL ASSETS</b>	<b><u>306,851.82</u></b>
<b>LIABILITIES &amp; EQUITY</b>	
Liabilities	
Current Liabilities	
Other Current Liabilities	
Registry office credits	13,786.58
Total Other Current Liabilities	<u>13,786.58</u>
Total Current Liabilities	<u>13,786.58</u>
Total Liabilities	13,786.58
Equity	
Opening Balance Equity	183,301.78
Unrealized Gain or Loss	3,461.26
Unrestricted Net Assets	100,857.18
Net Income	<u>5,445.02</u>
Total Equity	<u>293,065.24</u>
<b>TOTAL LIABILITIES &amp; EQUITY</b>	<b><u>306,851.82</u></b>



**RIV 1056 "Mile Marker"**  
RIV 896 Sunny x RIV 996 Milestone  
Owned jointly with Mike & Leslie  
Nelsh, Riviera Katahdins

**Sales We Are Attending This Year**

Indiana Premier Sheep Sale - April 26th *Greenfield, IN*  
Ohio Showcase Sale - May 9th *Greenville, OH*  
Midwest Stud Ram Sale - June 13th *Sedalia, MO*  
Katahdin Expo Sale - August 2nd *Evansville, IN*  
Midwest Hair Sheep Sale - October 4th *Salem, IN*



**BMB 0607 Forced Momentum**  
EHJ 818 Sedalia x BMB 2204R Momentum  
Owned jointly with Melvin Hostetler,  
Country Lane Farms




Registered Katahdins - Columbus, IN

**Brayden & Justin Burbrink**  
Brayden Cell: 812-371-7249  
Justin Cell: 812-498-4890

burbrinkshowstock@gmail.com • www.burbrinkfamilyfarms.com




# BURNHAM & GEORGE KATAHDINS CAMPBELL HILL, IL



**JOYCE 618 965-3641  
STEVE 419 306-1144**

**WATCH FOR OUR SHEEP IN 2025  
AT BIG OHIO, SEDALIA & THE  
EXPO AS WELL AS OUR 2ND  
ANNUAL ONLINE SALE MAY 26TH  
WITH INTEGRITY LIVESTOCK SALES  
WE ARE CONTINUING TO  
PRODUCE PRODUCTIVE SHEEP  
WITH THICKNESS MEAT & BONE  
THAT ARE EASY TO LOOK AT**

**BUCKEYE ACRES 4021  
TRIPLE SEXY**



**WE PLAN TO OFFER OFFSPRING OF THESE ELITE  
SIREs AS WELL AS DRIVE TRAIN & BUCKEYE ACRES 3519  
SIRE OF "THE BIG BROWN BUCK"**

**SHEEP ALSO AVAILABLE FOR SALE FROM THE FARM**

**BIG BANG**

**SALMON RUN 675**

# KHSI Board of Directors Meetings

## TELECONFERENCE DECEMBER 19, 2024

President Dan Turner called the meeting to order at 8:00 PM EST.

Board members present: Dan Turner, Howard Covington, Cindy DeOrnellis, Mike Jones, Justin Fruechte, Karen Kenagy, and Mandy Fletcher.

Mandy presented the Secretary's report and asked the board to review the minutes from November 2024. Cindy moved the minutes be accepted with the one correction made concerning DK interviews. Howard seconded the motion and it passed 6-0. The November 21st minutes were accepted.

Alan presented the treasurer's report which also included the year-to-date profit & loss and the balance sheet. Alan also provided the membership report and the registry report. Registrations did not increase, however, transfers are up four (4) percent.

### OLD BUSINESS

#### NSIP COMMITTEE - DAN

Dan reported that the committee, according to Michelle, was continuing with edits to the KHSI NSIP guide and the draft was forthcoming. January will be the next time for GEMS reimbursement.

#### REGISTRY IMPLEMENTATION COMMITTEE - JUSTIN

Justin reported that committee heads and members are trying out the Digital Beef system to determine needed changes. The process is moving quickly and further details will be ready to release in the near future. Digital Katahdin contract is for 5 years. Digital Katahdin "help files" were discussed but tabled. Further board discussions will continue at the January meeting.

#### ADMINISTRATIVE APPLICATIONS - JUSTIN & DAN

Justin reported that the screening committee (Justin, Dan, Cindy, Lynn, Robert and Henry) has 4 or 5 applications to present for interviews. Justin and Dan suggested that anyone from

our Board who would like to sit in/participate on the interviews is invited and welcome to do so. Board members will receive additional info on candidates and have the opportunity to ask additional questions (beyond what the committee has formulated) at the interviews. The committee will schedule interviews the week of January 6th and invite the board by email to attend each interview.

#### PROMOTIONS - MIKE

Mike reported that his committee will review and score the photos for the KHSI photo contest.

#### KHSI MEMBERSHIP LIST - ALAN

Alan discussed the fact that there is a change in the online site for what member/farm contact information shows up online under the membership section. Inconsistencies with complete information showing up were found. PDF form was found to be a reliable way to locate information.

CONTINUED ON PAGE 37

**Triple L Farms**  
Katahdin  
TRIPLE L FARMS

**Flock ID**  
640044

**Raising**  
Registered  
Katahdins  
since 1990

**Larry & Lisa Weeks**  
Waynesboro, VA • 540-480-8141  
lweeks9@gmail.com • <https://triplelfarms.com>

**Member NSIP**  
since 2001

**NSIP**  
National Sheep  
Improvement  
PROGRAM

**EASTERN ALLIANCE**  
FOR PRODUCTION  
Katahdins

**SHEEP GEMS**

*A lot of emphasis is placed on Rams.  
It takes exceptional Ewes to  
produce exceptional  
Rams.*

A board consensus was reached that all member information needs to be displayed and easily located. Alan will send a newsblast to see if anyone wants to be omitted, they can contact him to confirm that.

**NEW BUSINESS**

**2025 KHSI BUDGET - ALAN**

The budget was reviewed and modifications were made. Howard made a motion to approve the 2025 budget and Cindy seconded the motion. Motion carried and the budget was adopted unanimously 6-0.

Next meeting: January 20, 2024 at 8pm EST.

Howard moved to adjourn the meeting. Mike seconded the motion. The motion passed 6-0, and Dan adjourned the meeting at 10:00 PM EST.

Respectfully submitted,  
Mandy Fletcher

**TELECONFERENCE JANUARY 20, 2025**

President Dan Turner called the meeting to order at 8:00 PM EST.

Board members present: Dan Turner, Howard Covington, Cindy DeOrnellis, Mike Jones, Justin Fruechte, Karen Kenagy, and Mandy Fletcher.

Mandy presented the Secretary's report and asked the board to review the minutes from December 2024. Karen moved the minutes be accepted. Justin seconded the motion and it passed 6-0. The December 19th minutes were accepted.

Alan presented the treasurer's report which also included the year-to-date profit & loss and the balance sheet. Alan also provided the membership report and the registry report. Memberships are up by 300 members from last year - averaging around 100 members per year net growth. Registrations did not increase, however, transfers are up two (2) percent.

**OLD BUSINESS**

**NSIP COMMITTEE - DAN**

Dan reported that the committee selected the cover and photo for the KHSI NSIP guide. They will apply for the last payment on GEMS reimbursement. There is no funding at this time

to apply for the sheep center grant because the Farm Bill did not pass.

**REGISTRY IMPLEMENTATION COMMITTEE:**

**ADMINISTRATIVE DK REGISTRY POSITION SELECTION - JUSTIN & DAN**

Justin reported that interviews were conducted by the committee and KHSI Board. Each candidate had a wealth of value and knowledge to offer. He stated that the committee and board had a difficult time narrowing down to the final two top choices. Following discussions, Cindy suggested polling the board to determine the top candidate. Mike, Howard and Cindy preferred Associated Registry. Mandy, Karen, Justin and Dan preferred Brenda Lobdell Scheider. Justin made a motion to provide an offer to Brenda for the Administrative position with Digital Katahdin. Karen seconded. Discussions were held. During the group board voting, Mike stated that he objected to the motion. Mike requested that the board do a

**CONTINUED ON PAGE 38**

**FINDER**  
**KATAHDINS and MAREMMAS**

**We have Ram and Ewe Lambs available.**  
Give us a call.

**WARREN & PAM FINDER**  
14715 W. Maple Grove Rd.,  
Kingman, KS 67068  
620-532-1327  
finderhampshires@gmail.com



**Excellent set of Spring Lambs**

roll-call vote to determine affirmative votes and negative votes for the motion made to offer the position to Brenda. Roll call votes were as follows: Karen - Yes, Mandy - Yes, Howard - Yes, Justin - Yes, Cindy - Yes, and Mike - No. Motion passed 5 to 1. The offer will be made to Brenda, and if she accepts, a formal contract will be implemented.

**REGISTRY IMPLEMENTATION COMMITTEE HELP FILES - JUSTIN**

Digital Katahdin "help files" were discussed again and Justin made a motion to purchase the Digital Katahdin help materials/files (\$1,700) to use for education and assistance/reference for navigation through the system. The materials/files will be revised and updated. Mandy seconded the motion and it passed unanimously 6 - 0.

**PROMOTIONS - MIKE**

Mike reported that his committee completed the review of photos for the KHSI photo contest. Howard and Mike are investigating publications and ads to several magazines. Dan gave updates about his promotion of

Katahdins at the Pennsylvania Farm Show.

**NEW BUSINESS**

Next meeting: February 20, 2025 at 8pm EST.

Cindy moved to adjourn the meeting. Howard seconded the motion. The motion passed 6-0, and Dan adjourned the meeting at 9:15 PM EST.

Respectfully submitted,  
Mandy Fletcher

**TELECONFERENCE FEBRUARY 20, 2025**

President Dan Turner called the meeting to order at 8:00 PM EST.

Board members present: Dan Turner, Howard Covington, Cindy DeOrnellis, Mike Jones, Justin Fruechte, Karen Kenagy, and Mandy Fletcher.

Dan presented the Secretary's report and asked the board to review the minutes from January 2024. The board discussed some discrepancies and Cindy amended the minutes as Mandy could not access her computer during the meeting. Howard moved to accept the minutes as amended. Cindy seconded the motion and it

passed 6-0.

Alan presented the treasurer's report which also included the year-to-date profit & loss and the balance sheet. Alan also provided the membership and registry reports.

**OLD BUSINESS**

**NSIP COMMITTEE - DAN**

Dan reported that Michelle Canfield and the NSIP committee have completed the edits for the KHSI NSIP guide and it should go to print by end of the month. GEMS reimbursements are delayed as the group is waiting for additional submissions.

**REGISTRY IMPLEMENTATION COMMITTEE - JUSTIN**

Justin reported that Brenda Lobell Scheider accepted the position. Dan offered her a contract and board is to receive a copy of contract ASAP. Brenda is learning the Digital Katahdin (DK) program, working on methods to promote DK, developing

CONTINUED ON PAGE 42

**Fox Valley Katahdins**

We will be offering several yearling rams, sired by POWERBALL on our [PLAuctions.live](http://PLAuctions.live) sale on June 3, 2025.

Powerball LY 217

**Kenneth Zimmerman**  
**Cantril Iowa**  
**(641) 799-0302**  
[kennethlorelle@gmail.com](mailto:kennethlorelle@gmail.com)

**NSIP**  
National Sheep Improvement PROGRAM

**Xpressions** Designs for:  
Websites  
Brochures  
Ads  
Banners  
Trailer Decals  
**YOU NAME IT!**

Graphics Specialists

**Gail M. Hardy**  
**479-439-0726**  
[gail@xpressionsonline.us](mailto:gail@xpressionsonline.us)  
<https://xpressionsonline.us>

Since 1992

**Lillehaugen Farms**  
Brocket, ND

Raising Registered & Commercial Ewes  
Fall and Spring Lambing Program  
Breeding Stock For Sale  
Well-Managed, Quality Flock with Production Records

**Luke & Sandi Lillehaugen** • **Maynard & Dee Lillehaugen**  
H - (701) 259-2158 • C - (701) 367-9018  
Email: [sheep@lillehaugenfarms.com](mailto:sheep@lillehaugenfarms.com) • Website: [www.lillehaugenfarms.com](http://www.lillehaugenfarms.com)

# 2025 Katahdin Expo and Sale

Attention all sheep lovers, breeders, and farmers! Whether you're passionate about Katahdins, eager to expand your sheep knowledge, interested in buying or selling quality sheep, or looking to connect with fellow producers, the **Katahdin Hair Sheep International Expo 2025** is the event you don't want to miss!

**Location:** Vanderburgh 4-H Center, Evansville, IN

**Dates:** July 31- August 2, 2025

We've got an incredible 3-day lineup planned with workshops, demonstrations, sheep sale, and special events. There's something for everyone—from beginners to experienced producers. We are confident you'll love what's in store!

## ◆ Hands-On Learning & Live Demonstrations

Enhance your skills with interactive sessions covering essential sheep management techniques. Learn how to:

- Conduct a field necropsy
- Blend conformation with NSIP

- Tube feed and treat at risk lambs
- FAMACHA Certification
- Conduct a hair coat inspection

## ◆ Expert-Led Seminars & Workshops

Whether you're a beginner or a seasoned producer, industry experts will guide you through insightful discussions on:

- Selection, grading, and marketing your lamb
- The new KHSI digital registry
- Marketing NSIP
- Common diseases and health problems in sheep
- Nutritional needs
- Mastitis (preventing, diagnosing, and treating)
- Farm income tax 101
- Conformation

## ◆ Lamb Cook-Off and Social

Join the fun as teams go head-to-head in this exciting culinary competition! Want to participate? Call or text Mandy Fletcher at 276-759-4718 or

email [katahdinlambcookoff@gmail.com](mailto:katahdinlambcookoff@gmail.com).

Not a cook? No problem! Unwind at our evening social, where you can network, reconnect with friends, view sheep for sale, share sheep knowledge, enjoy Lamb Cook-Off samples, drinks, and refreshments in a relaxed setting.

## ◆ Vendor Showcase

Browse vendors featuring a variety of sheep-related products and services to support your operation.

## ◆ Annual KHSI Sheep Auction

Cap off the Expo with our Annual KHSI Sheep Auction, where you'll have the opportunity to buy or sell top-quality Katahdins. Whether you're looking to expand your flock or find elite breeding stock, this is the place to be!

Don't miss this incredible opportunity to learn, connect, and grow within the Katahdin community!

Register now at <https://katahdins.org/expo-signup>

We can't wait to see you there!

**KHSI EXPO - LAMB COOK OFF.**  
**TEAMS CAN SIGN UP NOW!**

FOR MORE INFORMATION  
OR TO REGISTER CONTACT:  
MANDY FLETCHER 276-759-4718  
[KATAHDINLAMBCOOKOFF@GMAIL.COM](mailto:katahdinlambcookoff@gmail.com)

# 2025 KHSI EXPO AND SALE

JULY 31-AUGUST 2, 2025

Whether you're passionate about Katahdins, eager to expand your sheep knowledge, want to buy and/or sell quality sheep, or looking to connect with fellow producers, the KHSI Expo 2025 is for you!



EDUCATION

HANDS-ON  
LEARNING

SHEEP SALE

LAMB  
COOK-OFF

SOCIALIZING



## TOPICS

- Conduct a field necropsy
- Blend conformation with NSIP
- Tube feed and treat at-risk lambs
- FAMACHA Certification

- Conduct a hair coat inspection
- Selection, grading, and marketing your lamb
- The new KHSI digital registry
- Marketing NSIP
- Common diseases and health problems in sheep

- Nutritional needs
- Mastitis (preventing, diagnosing, and treating)
- Farm income tax 101
- Conformation



REGISTER NOW: <https://katahdins.org/events/expo>

Vanderburgh 4-H Center  
Evansville, IN

# 2025 KHSI Expo Lodgings

There are many hotel options in Evansville. The hotels below have blocked rooms with discounted rates.

HAMPTON INN EVANSVILLE AIRPORT	
Address:	5701 Hwy 41 North, Evansville, IN; 4.5 miles to Expo
KHSI Rate:	\$116 + tax, 2 Queen or King
Contact:	812-464-1010
<a href="https://group.hamptoninn.com/ow392z">https://group.hamptoninn.com/ow392z</a>	
Cut Off Date:	July 11
AMENITIES	
Free breakfast, indoor pool, fitness center, Wi-Fi, pet friendly, handicap accessible	

HOLIDAY INN EXPRESS EVANSVILLE NORTH	
Address:	324 Rusher Creek Rd., Evansville, IN; 5 miles to Expo
KHSI Rate:	\$125 + tax, 2 Queen or King
Contact:	812-867-2200, ask for Beth (M-F 7:00a.m. – 3:00p.m.)
Cut Off Date:	July 18
AMENITIES	
Free breakfast, indoor pool, fitness center, Wi-Fi, pet friendly, handicap accessible	

COMFORT INN & SUITES EVANSVILLE AIRPORT	
Address:	3901 Hwy 41 North, Evansville, IN; 6 miles to Expo
KHSI Rate:	\$109 + tax, 2 Queen \$119 + tax, King
Contact:	812-250-9474 Group Name: KHSI Expo
Cut Off Date:	July 24
AMENITIES	
Free breakfast, indoor pool, fitness center, Wi-Fi, pet friendly, handicap accessible	

There are campsites available at the Vanderburgh 4-H Center	
<ul style="list-style-type: none"> <li>• 40 full hook-up sites with dump</li> <li>• Wi-Fi Internet access</li> <li>• Men's &amp; Women's bathrooms with showers</li> </ul>	<ul style="list-style-type: none"> <li>• A handicap restroom</li> <li>• \$44 a night</li> </ul> <p><a href="https://vanderburgh4hcenter.com">https://vanderburgh4hcenter.com</a></p>

**Prolificacy + Milk + Grass**  
*Ahead of the curve with genomic-enhanced EBVs.*  
[www.canfieldfarms.com](http://www.canfieldfarms.com)

	NSIP 50%	KMC 50%
NLB	9%	11%
NLW	11%	16%
MWWT	0.51	1.112
Index	102.56	103.89

Logos: NSIP National Sheep Improvement Program, GENOMIC ENHANCED EBVs, SHEEP GEMS

training webinars and will have an implementation timeline soon. Dan also communicated with Associated Registry regarding termination of services. He will also share Sue's response with the board.

**PROMOTIONS - MIKE**

Mike and his committee is researching new publications for advertising, especially regional publications for the Expo program and sale. The Hobby Farm publication will feature Katahdins in a future issue. Alan & Mike will assist with edits and provide articles.

**EXPO SALE - CINDY**

Committee reviewed staff and arrangement for the sale. Working with Mike to promote the sale in the area surrounding Evansville, IN. The committee will need more information regarding the barn arrangement to complete plans.

**NEW BUSINESS**

**WINTER HAIRALD - JUSTIN**

Members reported issues with the cover and magazine body separating

or being destroyed. When he contacted the printers, they blamed the postal service. Mike contacted Gail Hardy and his local post office. They agreed it was an issue with the binding. Board members noted the cover felt lighter than previous issues. Justin said the publisher offered several options to prevent further issues, but all came at a cost. Board members noted there had been no problems with previous issues and felt the problem was with the printer. Justin is to communicate this to the printer.

Alan has mailed several replacement copies to members who reported their copies were too damaged to read. He will send an email blast and post on Facebook that replacement copies will be provided to those who report damaged copies. There will also be a notice placed in the next issue of The Hairald.

**2025 EXPO REGISTRATION FEES**

Alan provided financial figures regarding past income and expenses to determine if registration fees should

be adjusted. Vendors will be charged for their display areas at the 2025 Expo. The board decided to maintain the same registration fees.

**KREG GRANTS - ALAN**

Alan presented grant applications from South Central Katahdin Association and the TexKats. Cindy moved to approve both applications. Howard seconded the motion and it passed 6-0.

Dan asked the Board to provide monetary support for the field day hosted by Matt Nolt. The event is usually attended by app. 100 people and the programming emphasized Katahdins. This year, he will have an event in March and July. Alan is speaking at the July event and Matt will cover his travel expenses. Board agreed to send Matt \$100 to help with expenses for his event.

Next meeting: March 20, 2025 at 8pm EST. (Mike has a conflict and will not attend).

CONTINUED ON PAGE 44

**BTX BLUESTEM FARM**

Registered Katahdins

- Superior parasite resistance
- Outstanding maternal performance
- Tested free of OPP, CL and Johne's
- Forage based system

BTX Bluestem Farm  
Judy & Art Sheridan  
Weatherford, TX  
817-584-4355  
www.bluestemtex.com

NSIP National Sheep Improvement Program  
EASTERN ALLIANCE  
Katahdins  
TEXAS

**WHITMER KATAHDIN FARM**

ESTABLISHED 2005

**Taking Orders for Spring Ewe Lambs and Ram Lambs**

Bred Ewes Available

**816-244-2572**

4840 SW St., Rt. O  
Stewartsville, MO

# Luzon Farm



Just a sample  
of our summer  
consignments.  
If you miss our  
online sale, we'll  
be at Sedalia &  
the Expo.  
Always available  
off the farm.



Our Natural  
Fall Genetics  
are working  
— and will  
**WORK FOR  
YOU!**



**MARK YOUR CALENDAR**

## SUCCESS STORIES — 2023 FALL LAMBS

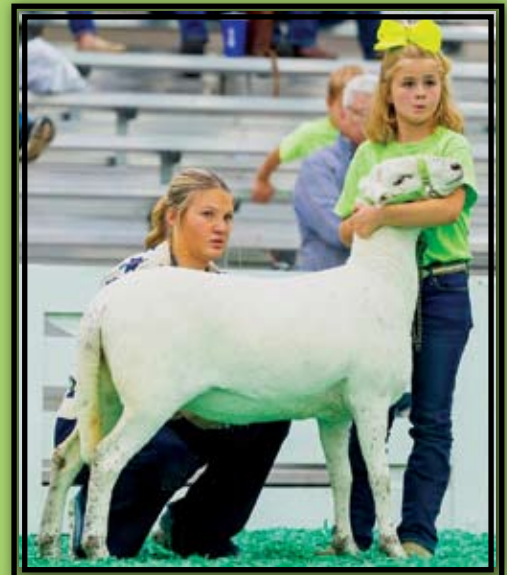
- 1876 - Sired 1st lamb crop despite heat & parasites of S. Louisiana. His lambs averaging 1 lb/day on grass.
- 1856 - Birthed March triplets in California
- 1873 - Lambled as a yearling in late fall 2024
- 1857 - Reserve Champion Hair Ewe, Kansas State Fair



Ed & Cindy DeOrnellis 573-291-0591 (c)  
Keith & Megan Markway 573-291-4787  
Bonnots Mill, MO



Join us on  
Facebook:  
luzonfarm



Luzon 1907 5th Feb. Ewe Lamb  
2024 NAILE Jr. Show

**KHSI BOARD OF DIRECTORS  
MEETINGS, CONTINUED FROM  
PAGE 42**

Howard moved to adjourn the meeting. Cindy seconded the motion. The motion passed 6-0, and Dan adjourned the meeting at 9:30 PM EST.

Respectfully submitted,  
Cindy DeOrnellis



**Board of Directors**

**KATAHDIN  
HAIR SHEEP  
— INTERNATIONAL —**

**Two Positions Open  
Send Bios to KHSI Operations  
[info@katahdins.org](mailto:info@katahdins.org)  
Due May 15, 2025**



**New Certified  
KHSI  
Hair Coat  
Inspector**

**New Personal Status**

Kim Stutzman	OR
To become a Certified KHSI Haircoat Inspector Contact: <a href="mailto:info@katahdins.org">info@katahdins.org</a>	

For a listing of the members of the KHSI Board of Directors, addresses for KHSI Operations and KHSI Registry, please refer to our Member's Guide, page 50.

CHECK OUT OUR DEEPEST SET OF FALL RAMS EVER



STURDY POST RANCH

**Fall Born Sale- April 29th**

**Bred For Balance Production Sale- May 29th**

**Midwest Stud Ram Sale**

**Commercial Ewe Lambs For Sale Off The Farm**

Justin & Crissa Fruechte  
605-690-3309  
Ward South Dakota



# Primer for Selling Sheep at a Purebred Livestock Auction

By Jane Smith, KHSI President  
*Reprinted from the Spring 2021 Katahdin Hairald*

Spring has sprung and the lambs are growing fast. I hope all of you have had a successful lambing season.

By now, you are probably starting to think about how you are going to market your lambs. Maybe you have decided you would like to take some of them to one of the major sales. We are fortunate to have several of these sales. Check the **Calendar of Events** in the centerfold of *The Hairald* for a list of upcoming sales. If you are entering, how should you prepare? Here is a guideline of the main things you need to know.

1 Obtain entry forms. Most entry forms are available online. Some can be done over the internet and others are printed out and mailed.

You have your forms ready. Now what sheep are you going to enter? I cannot stress enough how important it is to bring quality animals to these sales. Be very critical in your assessment of your animals. Check the mouths for correctness. Do the

teeth meet the pad correctly? Check for reproductive soundness. Are the testicles even sized, well developed? What is the animal's haircoat like? Woolly coats are not desirable. What is the body condition of your animal? Watch how the animal walks? How are the pasterns? Does the animal stand on strong pasterns? Check out the *Katahdin Guide* for a good article on structure. **Remember quality always reigns over quantity.** Don't overdue your number of entries on your first sale. Remember you must get all of them ready, shown and sold. Don't overload your consignment with rams. Many sales have a restriction on how many rams you can sell or if you sell more than 1, you must consign a certain number of ewes as well.

2. Fill out the required information on the form. Most sales will let you enter "Information Sale Day", but I would encourage you to fill out the entire form. This information will help buyers decide if they are interested in your consignments. **It is like a little ad.** You will be able to substitute an animal for the one entered, but each

sale has different requirements about substitutions. **Again, read the rules.**

3. Carefully read the rules and information about the sale. This will tell you when you must have your entries in, when you must have your animals in place and what is required to sell your animal. Make sure you **get your sheep registered** with KHSI well in advance, so you don't have to pay rush fees.

4. All sales require that the sheep have a health paper (**CVI- Certificate of Veterinary Inspection**). These are only good for 30 days, so plan accordingly. You will need it to be good for interstate transport. You will need a copy of the health paper for each sheep in your consignment. If you are selling rams that are over 6 months of age you will need to have a **B ovis test that is negative**. This also must be within 30 days of the sale. I always like to still have the test be valid at least 3-5 days after the sale date so the buyer can get the sheep home before the test result expires. Some states require that you get a permit to bring

CONTINUED ON PAGE 46

**Waldoview Farm**  
Strongly Maternal, Parasite Resistant Seedstock  
for Forage-based Producers

Now offering Improved Accuracy with Genomic-enhanced EBVs

Tom and Lindsay Hodgman  
Winterport, Maine  
207-852-2764  
hodgmans@msn.com

Visit us on Facebook [/waldoviewkatahdins/](https://www.facebook.com/waldoviewkatahdins/) or on the web at [katahdinsforsale.com](http://katahdinsforsale.com)

NSIP National Sheep Improvement PROGRAM

GENOMIC ENHANCED EBVs

EASTERN ALLIANCE FOR PRODUCTION *Katahdin*

sheep to that state. Your veterinarian can help you with this. Again, **READ THE SALE REQUIREMENTS.**

5. I encourage you to **get your sheep DNA tested for scrapie resistance at Codon 171.** Many buyers will want this information and it is a requirement that you have documentation of the results for every sheep that you consign to the KHSI Expo. This test can be done with a blood draw or a tissue sample. There is no 30-day restriction on this test, so get them done early to save you stress and rush fees.

6. **Start working with the sheep** you are consigning to the sale. The more time you put in ahead of the sale the easier the sheep will be to handle when it is time for showing for sale order or just taking your sheep off the trailer and to the pens. Trim the hooves on your sheep at least a week prior to the sale. You don't want to trim them too short and have a sore-footed sheep for sale day.

When working with your sheep, make sure you are not using halters that are cutting into their head when you are breaking them to lead. I like

to use a buckle type halter or a buckle type with a chain that tightens and loosens under the chin. As always, use common sense and **don't leave a sheep tied up to a fence and leave it.** Sheep have been known to choke themselves and no one wants that heartbreak. So, we don't want rope burns on these animals, we don't want to see you dragging them down the aisle as they lay on the ground, etc. Remember, you are setting an example and representing your breed, so go the extra mile and put in the work ahead of time.

You will need to wash your sheep at some point before the show and sale. I like to wash them at least once prior to traveling to the event. This will encourage shedding and is just more good practice for the sheep in how to be handled. Then I would want to wash them again before the show/sale. Give them time to dry, so you aren't trying to deal with a soggy sheep.

7. Now it is time to load up and go to the sale. You are responsible for everything your sheep needs during the event. You will be required

to feed/water/care for them during the entire event-that means buckets, feeders, feed, hay, bedding, halters (1 per animal is best).

**You will be the one responsible** for checking in with the sale management when you arrive-bring them your registration papers, health papers, test results...anything they have required you to bring. You will be assigned a lot number for each animal and the sale committee will paint that number on your sheep prior to the show/sale.

You will probably want to have some sort of sign to **identify your consignment.** These can be simple to elaborate. You will also want to have collected all the information about your sheep, i.e. Birth weights, 60-day weights, so you can tell interested buyers the information about your animals. It is helpful to have some of that information posted on your pen with the lot number you were assigned listed on that sheet as well. Many people use a copy of the registration paper for this purpose.

Just remember to put it on a clip-

CONTINUED ON PAGE 47

**Feeders and Scales**  
for your sheep & goats!

Creep Feeder

Mineral Feeders

Creep Doors and Panels

Easy Weigh Sheep & Goat Scale

Paragon Farm carries Small Ruminant Handling & Feeding Equipment manufactured by DS Livestock, Ramstrong, L.M. Bateman, and Universal.

**PARAGON FARM, LLC**

Small Animal Handling Equipment | 717-445-6020  
sales@paragonfarm.net | 170 Sensenig Rd. Ephrata, PA

board or something else solid or the sheep tend to have them for a snack.

If you are involved in NSIP, **make sure you list your NSIP information and include the searchable data link in the catalog. It is your responsibility to make it as easy as possible for your potential buyers to find the information they need.**

8. You will be the person taking the sheep to the show/sale ring. This is where all your prep work will pay off. You be able to handle your animal and present them in their best manner. When it is time for the sale you want to have your animals ready to go. Make sure you have brushed their coats, wiped their noses and face. Pay attention to the sale order that has been posted. It is your job to get your sheep up to the line to go in the sale ring. Have a sale order with you so you know where you fit in the order. Who are the 4-5 numbers ahead of you? You don't want to be coming late to the line-up and having to push past other consignors. If you have several sheep close together in the lineup, see if you can find someone

to hold your later selling sheep in line while you sell your first one. The sale moves along at a pretty good clip, so pay attention.

9. When you enter the sale block, you may turn in a small information card to the auction block with a very short amount of information and you may list a floor (a price that you feel you must get) to sell your animal. Usually there is a minimum bid that the sheep must bring, or it is passed out as a no sale. Example: At the Expo the minimum bid for any sheep is \$250. If no one bids at least that amount the sheep is a no sale and you will take the sheep back home with you. If you wish to place a reserve bid that is higher than \$250, you will write your reserve bid on a card and give it to the auctioneer or clerk on the sale block. That lot numbered sheep will then go up for sale. If it brings more than your reserve bid your sheep will sell. If it doesn't bring your reserve bid, it will be listed as sold under one of the no sale numbers that the auctioneer uses, and you will take the sheep home. You do not pay commission if your

animal does not receive a minimum bid, but **you will pay commission** on any animal that brings more than the minimum bid, even if your sheep doesn't sell because you have put a reserve on it. Example: Your reserve bid is \$500. No one bid \$500, so you will pay commission on \$500, which would be \$60 if the commission is 12%. Reserve bids can be useful, but they need to be used judiciously. Always check with the sale management for their rules concerning reserve bids. It may be different than my description. This is my experience. Always check with the sale management before you leave the sale if there are still sheep in your pens. Make sure they are all sold or have rides to their new buyers!

10. Last, but not least. Have fun. Enjoy the opportunity to visit with your fellow breeders. Each has a unique story to tell and you will find most of them to be quite willing to help you.

If you have any questions, contact the sale management, KHSI, or any member of the KHSI sale committee. We will be glad to help.



# Round Mountain Consulting

Jim Morgan

**Round Mountain Consulting Can Help You With:**

- Understanding how to use EBVs
  - o set and achieve flock goals
  - o purchase rams
  - o select replacement ewes
- Submitting data to NSIP
  - o organize data
  - o learn to use Pedigree Master
  - o submit data
  - o help those without computers or internet access

**Why Round Mountain Consulting?**

- 20+ years one-on-one consulting experience
- Served 20 years on NSIP Board & 10 years as President
- 20 plus years' experience consulting & serving Katahdin breeders

**FREE FIRST HOUR of consulting to determine if:**

- EBVs work for your flock
- Round Mountain Consulting will help achieve your goals

**Jim Morgan**  
**479-236-9569 • jlmm@earthlink.net**

# Riviera

RIV

Quality Seed Stock DNA tested

50 years in Sheep Industry

At the time of the magazine arrival, we will be sold out for this year. Be sure to call or visit next fall for our new prospects!

A BIG THANKS TO ALL INQUIRIES AND BREEDERS FOR THE TRUST IN OUR PROGRAM!!!

Melvin Hostetler, PA bought 1/2 interest in a foundation stud RIV 1093, a maternal 1/2 brother to SILVER GENES (record selling fall ram) purchased by Rack and Leg of Lamb at 2024 MWSRS.

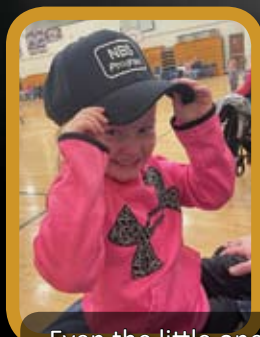


Our 4 Fall Studs we bred with. Three of these studs have gone to these breeders in late May:

- RIV 1104 Gingerich Family Farms (Silas), VA
- RIV 1095 Greg Wilson, KY
- RIV 1119 Luke Roy, KY

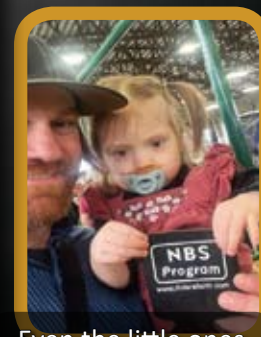


"Achilles" as a lamb. A big THANK YOU to Henry & Becky Shultz of Prairie Lane Farms of leasing this proven stud to us. We hope to get several super prospects out of him!!



Even the little ones have figured it out!

Wade Burkhalter & Michelle Bauer, NJ purchased STONE COLD a yearling ram (Yellow Stone x RIV 880). He is a maternal half brother to SILVER CREEK. Watch for these young breeders in the future!!



Even the little ones have figured it out!

Mike & Leslie Nelsh

NBS

2834 Kennard Kingscreek Rd • Cable, OH 43009 • Ph: 937-471-5682 • Cell: 937-244-2673  
mikenelsh278@gmail.com & rivierasheep@gmail.com • <http://www.rivierafarm.com>

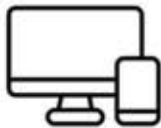
NBS



## The Katahdin Hair Sheep International registry has moved!

Katahdin Registry Services is part of your association.  
Your Registrar is available to assist you with all of your registration,  
transfer and flock information needs.

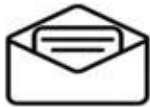
Members can now register and transfer sheep in two ways.



### PAPER REGISTRATIONS

**Complete registration/transfer applications  
and work orders. Then send paperwork to:**

Katahdin Registry Services  
Brenda Lobdell Scheider  
4543 North Henderson Road  
Freeport, Illinois 61032



### ONLINE REGISTRATIONS

**Enter and submit registration and transfers online  
using the Digital Katahdin system.**

Katahdin Registry Services  
Brenda@Katahdins.org  
815.238.8110

Before submitting your first registrations online,  
you will need a user name and password.  
Contact the Registry Office for more information.



### DIGITAL KATAHDIN QR CODE

**Take a look at all Digital Katahdin can do.**  
It's more than a registry ... it's a flock management tool!



### NEED HELP?

**Contact Brenda at the Registry Office with questions.**

Weekly online webinars begin **April 28**  
for anyone wanting to learn how to use Digital Katahdin.  
Mondays from 6:30 pm to 7:30 pm (Central)  
Contact the Registry Office to get Zoom log in information!

---

#### KATAHDIN REGISTRY OFFICE

4543 North Henderson Road | Freeport, Illinois 61032 Phone | 815.238.8110 Email | Brenda@Katahdins.org



## *“The Breed Whose Time Has Come”*

**KHSI Operations**  
PO Box 739 – Fowlerville, MI 48836  
717-335-8280 ext 1  
[info@katahdins.org](mailto:info@katahdins.org)

**KHSI Registry**  
4543 N Henderson Rd, Freeport, IL 61032  
815-238-8110  
[Brenda@katahdins.org](mailto:Brenda@katahdins.org)

## **KHSI Member’s Guide**

04/25

The Katahdin Hairald is the official publication of Katahdin Hair Sheep International, which provides education about:

- registering individual Katahdin sheep and recording performance
- maintaining the distinct identity of the Katahdin breed
- approaches to promotion and marketing
- summaries of research and development related to the breed

### **2024-2025 Board of Directors**

### **Board Term**

President: Dan Turner, <a href="mailto:dantturner44@gmail.com">dantturner44@gmail.com</a> , (727) 532-2435, Pennsylvania	2023-2026
Vice President: Justin Fruechte, <a href="mailto:justinf@millbornseeds.com">justinf@millbornseeds.com</a> , (605) 690-3309, South Dakota	2022-2025
Secretary: Mandy Fletcher, <a href="mailto:beyondblessedfarm@gmail.com">beyondblessedfarm@gmail.com</a> , (276) 759-4718, Virginia	2024-2027
Treasurer: Howard Covington <a href="mailto:hscfarms@gmail.com">hscfarms@gmail.com</a> , (936) 520-2689, Texas	2022-2025
Director: Karen Kenagy, <a href="mailto:krkenagy@hotmail.com">krkenagy@hotmail.com</a> , (503) 351-6978, Oregon	2024-2027
Director: Cindy DeOrnellis, <a href="mailto:cad_luzon@hotmail.com">cad_luzon@hotmail.com</a> , (573) 291-0591, Missouri	2023-2026
Director: Mike Jones, <a href="mailto:mikejonesauctioneer@gmail.com">mikejonesauctioneer@gmail.com</a> , (706) 773-3612, Georgia	2023-2026

### **Honorary Members**

Honorary Member: Dr.Charles Parker, [cfparker@aglaia.net](mailto:cfparker@aglaia.net), Ohio  
Honorary Member: Laura Fortmeyer, [jubilee@jbntelco.com](mailto:jubilee@jbntelco.com), (785) 467-8041, Kansas  
Honorary Member: James Morgan, [jlmm@earthlink.net](mailto:jlmm@earthlink.net), (479) 236-9569, Arkansas  
Honorary Member: Teresa Maurer, [jlmm@earthlink.net](mailto:jlmm@earthlink.net), (479) 236-9569, Arkansas  
Honorary Member: Dr. Jim Miller, [jmille1@lsu.edu](mailto:jmille1@lsu.edu), (225) 578-9684, Louisiana  
Honorary Member: Dr. Ann Zajac, Virginia  
Honorary Member: Dr. Dave Notter, Virginia  
Honorary Member: Mark Dennis, Louisiana

### **KHSI Operations:**

Alan Culham, PO Box 739, Fowlerville, MI 48836, [info@katahdins.org](mailto:info@katahdins.org), 717-335-8280 ext. 1, 717-335-8279 (fax)  
Office Hours (Eastern time): Monday - Friday (9 am - 5 pm). Voicemail and email: available for messages 24 hours per day.

### **KHSI Registry:**

Brenda Lobdell Scheider, 4543 North Henderson Road, Freeport, Illinois 61032 Phone – 815-238-8110  
email – [Brenda@katahdins.org](mailto:Brenda@katahdins.org)

- Contact the Registry with questions about registration and transfer procedures.
- Send the following to the Registry:
  - completed forms for registering, recording, transferring and naming Katahdins
  - completed Membership Forms, Renewal Forms, Address Changes and Dues. Note: new memberships and renewals can be paid online using credit/debit cards at the KHSI website via PayPal.
  - Address changes or other corrections for print or web

Office Hours (Central time): Monday to Thursday noon - 5pm. Digital Katahdin user meetings Monday 6:30-7:30 pm.

## WORK ORDER AND FEE SCHEDULE

Date \_\_\_\_\_ Flock ID \_\_\_\_\_ Flock Name \_\_\_\_\_

Contact Name \_\_\_\_\_ Contact Phone \_\_\_\_\_ Email \_\_\_\_\_

Address \_\_\_\_\_ City \_\_\_\_\_ State \_\_\_\_\_ Zip \_\_\_\_\_

I am:  Voting Member (Individuals, Families and Partnerships)  Youth Member (Not yet 20 as of January 1)  Non-Member  New Member

I would like registration papers:  USPS to me (\$1)  Emailed to me (\$1)  I will print from Digital Katahdin (No Charge)

MEMBERSHIPS	Quantity	Price	Total
New and Renewal Voting Member <i>(New members please complete a membership application form)</i>		\$45	\$ 0
Late Renewal Voting Member <i>(Membership renewals due January 31)</i>		\$60	\$ 0
New or Renewal Youth Member		FREE	\$ 0
REGISTRATIONS <i>(Must be a KHSI member to register or transfer sheep)</i>	Quantity	Price	Total
<b>Animals less than 2-years-old</b>			
Digital Katahdin Online		\$6	\$ 0
Mailing Paper Application to Registry Office		\$7	\$ 0
Registration Paper Sent to Owner		\$1	\$ 0
<b>Animals more than 2-years-old</b>			
Digital Katahdin Online		\$12	\$ 0
Mailing Paper Application to Registry Office		\$14	\$ 0
Registration Paper Sent to Owner		\$1	\$ 0
RECORDATIONS <i>(If registering and transferring, must pay both fees)</i>	Quantity	Price	Total
<b>Animals less than 2-years-old</b>			
Digital Katahdin Online		\$6	\$ 0
Mailing Paper Application to Registry Office		\$7	\$ 0
Registration Paper Sent to Owner		\$1	\$ 0
<b>Animals more than 2-years-old</b>			
Digital Katahdin Online		\$12	\$ 0
Mailing Paper Application to Registry Office		\$14	\$ 0
Registration Paper Sent to Owner		\$1	\$ 0
TRANSFERS <i>(Must be a KHSI member to register or transfer sheep)</i>	Quantity	Price	Total
<b>Within 60 days of the sale</b>			
Digital Katahdin Online		\$6	\$ 0
Mailing Paper Transfer to Registry Office		\$7	\$ 0
Registration Paper Sent to Owner		\$1	\$ 0
<b>More than 60 days after the sale</b>			
Digital Katahdin Online		\$12	\$ 0
Mailing Paper Transfer to Registry Office		\$14	\$ 0
Registration Paper Sent to Owner		\$1	\$ 0
<b>RE-ISSUE A CERTIFICATE</b>		\$5	\$ 0
<b>UPGRADING <i>(Changing hair coat type)</i></b>		\$5	\$ 0
<b>CHRISTENING <i>(Purchasing an individual sheep name)</i></b>		\$25	\$ 0
Requested Name (17 characters or less): _____	Registration Number: _____		
<b>RUSH FEE <i>(Per Registration or Transfer)</i></b>		\$5	\$ 0
SPECIAL HANDLING		Price	Total
UPS Overnight (next day)		Cost + \$5	
USPS Two Day (allow two business days)		\$35	\$ 0
USPS Priority Mail (allow four business days)		\$15	\$ 0
<b>TOTAL</b>			<b>\$ 0</b>

PAYMENT <i>(Payment must be received before processing can begin)</i>		
Check	Check Number _____	Check Amount _____
Credit Card	Credit card payments can be made by clicking the <b>MAKE A PAYMENT</b> button on the top right of the KHSI web page.	

**KATAHDIN REGISTRY OFFICE**

4543 North Henderson Road | Freeport, Illinois 61032 Phone | 815.238.8110 Email | Brenda@Katahdins.org

© March 2025

# Classified Ads

Classified Sheep Ads are limited and FREE to paid members of the KHSI. "Sheep Wanted" ads are free for all. Ads will be placed for 60 days, after which they will be removed. Ads may be resubmitted. All items for sale will be listed on this page in the order in which they are received. All additions, corrections, deletions to ads already placed must be made through the KHSI Operations Office.

## SHEEP WANTED

3/3/2025 - CALIFORNIA

Looking for up to 500 ewes / Katahdin or Katahdin cross. Tim Arrow-smith, Blue Tent Farms dba Western Grazers, 859 Washington Street #259 - Red Bluff, Ca 96080. Phone: 530-200-2929 Fax: 866-499-0524. E-Mail: [bluetentfarms@gmx.com](mailto:bluetentfarms@gmx.com)  
[www.westerngrazers.com](http://www.westerngrazers.com)

2/21/2025 - C KENTUCKY

Looking for 5-10 commercial ewes preferably with lambs. Would like ewes to be 1-3 years of age. Max travel distance 1-2 hours from Harrodsburg, KY. Thank you! (859) 457-8681

## SHEEP FOR SALE

3/31/2025 - E OREGON

Registered Katahdin Ewe and Ram Lambs. Pictures are available upon request. If you have any questions, please let me know. Pine Creek Katahdins - Halfway, Oregon (541) 490-7553

3/19/2025 - NW ARKANSAS

Will start lambing April 1, and I am currently taking orders for ewe lambs and ram lambs. I have registered Katahdins and have been raising Katahdins for over 35 years. I am a practicing large animal veterinarian, and I work closely with the University of Arkansas Parasitology Department, developing parasite resilient stock. The ewe lambs are priced at \$450 each. The rams are priced at \$500. They will be ready to leave the farm July or August. Grassfed in the Ozarks/Chevalier Ranch - Western Grove, AR (870) 577-2287 [thedrisrealin@gmail.com](mailto:thedrisrealin@gmail.com)

**KHSI Operations**  
**717-335-8280**  
**ext. 1**  
[info@katahdins.org](mailto:info@katahdins.org)

## SHEEP FOR SALE

3/17/2025 - C FLORIDA

Five registerable Katahdin sheep available. 2 ram lambs, 2 ewe lambs, and 1 yearling ewe; all grass fed. Lambs were born between 1/2/25 and 1/10/25, weighing between 29lbs and 43lbs on 3/9/25. Yearling ewe was born 1/14/24 and weighed 100lbs on 3/9/25. Asking \$300.00 each OBO. Crazy A - Wauchula, Florida 863-864-0705

3/14/2025 - NW OHIO

Four ram and seven ewe lambs that were born in January and February of this year. I have 2 yearling ewes for sale that were not bred last year. I also have one almost three year old proven ewe. All our sheep are grass fed only, registrable, and scrapie genotype RR. We try to breed for fast growing and parasite resistant sheep that gain well on pasture. We have a nice group of lambs this lambing season. The price ranges from \$400-\$600. Heaven's Sunshine Acres - Rossburg, OH (937) 569-9174 [Hadassahan@icloud.com](mailto:Hadassahan@icloud.com)

3/7/2025 - C WYOMING

Looking to buy or trade for a new registered Ram. I currently have a 3 year old registered black and white Ram that is proven. He has given us two good years of lambs and we are holding most of his offspring and want to swap out our Ram. We also have some yearling ewes that have lambed for sale as well. Please contact me if interested. Sloan Croce - Riverton, WY (307) 850-2136 [sloancroce@gmail.com](mailto:sloancroce@gmail.com)

**Send Registrations to:**  
**Brenda Lobdell Scheider,**  
**4543 North Henderson**  
**Road, Freeport, IL 61032**  
**Phone - 815-238-8110**  
[Brenda@katahdins.org](mailto:Brenda@katahdins.org)

## SHEEP FOR SALE

3/5/2025 - C MONTANA

2025 ram lambs available August 1st. Sired by ADS "Aspen Flash" & ADS "Aspen Kat King", son and grandson of ADS "Aspen Legacy". Extremely quite, zero aggression. Also some ewe lambs and ewes for sale. Our ewes are excellent mothers, easy lambers, good feet, udders, & great milkers. Heavy on "VJ Classic" foundation breeding. We breed for conformation, hardiness, size, and disposition. Highly parasite resistant. Colors and white. Our sheep are raised with LGD's out on high range grasslands and hay pivots. For more information visit our website at: [www.agnewranch.com](http://www.agnewranch.com). Contact 406/930-1701. [woww@triangle.com](http://woww@triangle.com) Agnew Ranch - Big Timber, Montana

3/5/2025 - C KENTUCKY

4 very stout bred ewes (\$275 a head), and 1 good looking yearling ewe. All are healthy and doing great! We are located in Harrodsburg KY. Please shoot me a text for pictures if you're interested! 859-457-8681 Calloway-Farms [jc.calloway0412@gmail.com](mailto:jc.calloway0412@gmail.com)

2/28/2025 - WC TENNESSEE

Katahdin flock downsizing! 3 commercial/recorded ewes with single ewe lambs, 6, 5, and 2 years old. Lambs born 2/1, 2/3, & 2/11. \$400 each group. 1 registered 6 year-old ewe, has given me 2 singles and 2 sets of twins, friendly and halter broken, was shown 4H as a lamb, ready to go in May when her lambs are weaned, \$400. 2 recordable white ewe lambs & 2 recordable colorful ram lambs, brown and black and white, born 2/6, 2/7, 2/12, & 2/14, ready to go in May, \$300-\$350 each. 1 registered stud ram, ABT 23152, nice long ram, produced nice lambs for me, halter broken and calm, white with brown speckles, \$450. Can sell as a group or separate. Shady Spring Katahdins - Hurricane Mills, TN (423) 315-1698

CONTINUED ON PAGE 53

**SHEEP FOR SALE**

2/24/2025 - C TEXAS

Registered ewe and ram lambs born 12/24 through 2/25; available April / May 2025. 6 ewes @ \$475 each, 4 rams \$425 each. All lambs sired by 2024 USDA Boonesville #2 NSIP Ram, 4 ewe lambs born from USDA NSIP ewes. Our focus on quality genetics, health and nutrition programs allows us to continue protecting and producing healthy Katahdin sheep. Delivery available with first 100 loaded miles free. \$3/loaded mile thereafter. We own and operate a coffee roastery as our full time job, and offer 1 free bag of coffee per lamb purchased. Contact [Mark@spiralhorncoffee.com](mailto:Mark@spiralhorncoffee.com), 325-792-6818, send text or voicemail if we are unable to answer when you call.

2/14/2025 - S MAINE

Female Katadhin/Dorper cross about 11 months old. \$250 must go before April 23. Academy Hill Katadhins - Parsonsfield, ME (207) 298-8756 [office@ossipeeorganics.com](mailto:office@ossipeeorganics.com)

2/12/2025 - S ALABAMA

Adorable Registered ewe lamb born on 2/24/24! She's been rotationally grazed with electric fencing for optimal health. Located in Gadsden, AL. 770-896-5358 or [Maida125@comcast.net](mailto:Maida125@comcast.net) Thank you!

2/12/2025 - C NEW JERSEY

1 Katahdin Yearling Ram. Born late February/Early March 2024. Has been proven in our flock and is looking for a new home. Must provide own transportation from Peapack and Gladstone, NJ. \$500. Maranatha Farm (908) 875-6556

2/12/2025 - TENNESSEE

February 2025 lambs for sale. Sired by registered rams from Tavalin Tails Farm. From registered and commercial ewes that are maternal and parasite resistant. All lambs can be registered or recorded. All colors. Genetics from COR, ABT, and HCK. Want to sell at weaning in May - june. Text for pictures and more details. \$250 and up. Shady Springs Katahdins - Hurricane Mills, TN (423) 315-1698

**KAT+ EWES**

1/5/2025 - WASHINGTON

Grass-fed flock in the Pacific Northwest in WA State. Ewes fed local grass hay and whole corn-barley in late pregnancy. Lambs born on pasture in an unsheltered, hands-off environment and raised on grass alone, weaned at 120 days. Superb maternal traits, ewes with young lambs at side navigate a 15-acre pasture with 3' tall reed canarygrass with few losses. NSIP flock that focuses on growth, milk and prolificacy. All adult breeding ewes and rams are NSIP genotyped. FEC data collected in 2023-24 to inform GEBV accuracy. Up to forty April-born 2025 ewelambs could be made available in August 2025. Ram lambs available as well. Four diverse NSIP sires used from across the U.S. [www.canfieldfarms.com](http://www.canfieldfarms.com) contact [michelle@canfieldfarms.com](mailto:michelle@canfieldfarms.com) 360-770-0615

**LIVESTOCK PROTECTION ANIMALS FOR SALE**

2/24/2025 - SW MISSOURI

Nestled in the Ozarks, near Springfield, Missouri. 2J 2K Ranch is home to a devoted team of Maremma Sheepdogs integral to the success of our family farm. Our Maremma's lineage descends from working dog pedigrees, including Heritage American and Italian Imports. These loyal guardians ensure the safety of our poultry and livestock, protecting them from a variety of threats, including hawks, eagles, foxes, coyotes, raccoons, and more. Raised alongside farm animals, the puppies also interact with barn and house cats and our other dogs. Our commitment to quality extends to genetic health testing, encompassing OFA and/or PennHIP assessments. Implementing ENS, ESI, Puppy Culture, Avidog, BAB techniques, and a specialized LGD Puppy Curriculum, our Maremmas are well-socialized and love people. We are certified puppy evaluators, and each pup undergoes a thorough temperament assessment. Personal delivery options available. For further information, visit our website, Facebook, Instagram, and YouTube Channel. Complete the Puppy Application to join our waitlist or to apply for our 2025 puppies. Puppies now available. 2J 2K Ranch - Conway, MO (602) 628-9361 [kara@2j2kmaremmasheepdogs.com](mailto:kara@2j2kmaremmasheepdogs.com) <https://2j2kmaremmasheepdogs.com/>

CONTINUED ON PAGE 54

**MAKE A NOTE OF THE NEW REGISTRY ADDRESS**

SEND YOUR REGISTRATIONS TO:

KHSI REGISTRY Office/  
DIGITAL KATAHDIN  
BRENDA LOBDELL SCHEIDER  
4543 N HENDERSON Rd,  
FREEPORT, IL 61032  
815-238-8110  
[brenda@katahdins.org](mailto:brenda@katahdins.org)

**NEED TO SELL SHEEP?**  
PLACE A  
**FREE**  
Sheep for Sale ad  
at <https://katahdins.org>  
or contact Alan at  
717-335-8280 ext. 1  
or [info@katahdins.org](mailto:info@katahdins.org)

## HERDING DOGS FOR SALE

2/24/25 - SW MISSOURI

2J 2K Ranch, nestled in the Ozarks near Springfield, Missouri, offers exceptional Border Collies from proven bloodlines. Our Border Collies are bred for intelligence, drive, and athleticism. Raised on our farm, they are well-socialized with livestock, other dogs and cats and of course people. We prioritize genetic health and temperament, conducting comprehensive OFA and/or PennHIP evaluations. Our puppies benefit from early neurological stimulation (ENS), early scent introduction (ESI), Puppy Culture, Avidog, and other enrichment programs to ensure confidence and adaptability. Personal delivery options available. Visit our website, Facebook, Instagram, and YouTube to learn more. Complete our Puppy Application to join our waitlist or apply for a 2025 puppy. Puppies available now, with occasional adult dogs also offered. 2J 2K Ranch - Conway, MO (602) 628-9361 [kara@2j2kbordercollies.com](mailto:kara@2j2kbordercollies.com) <https://2j2kbordercollies.com/>

## SHEEP TRANSPORT

C IOWA

Sheep hauling available, primarily Midwest region, pickup and goose-neck trailer only. Any number 1-100 depending on animal size, seed stock producers, commercial producers. Cost is at a loaded per mile basis unless determined before hand. Will haul farm to farm or to sale barns. South River Farms. Call or text 515-238-3508



See the  
**2025**  
Hairald ad  
deadlines  
page 5

## Katahdin Recipe Forum



### Lamb with Orzo

Recipe by the Taste of Home

<https://www.tasteofhome.com/recipes/lamb-with-orzo/>

Recipe by Dan Kelmenson

Prep Time 30 min.; Cook Time 8 hours

Yield 9 servings

**Looking to switch up you slow-cooker staples? Consider this lamb entree. A terrific meal-in-one, it certainly adds flair to dinnertime doldrums. A splash of lemon juice and zesty lemon peel complement the flavors of fresh spinach and feta cheese.**

### INGREDIENTS

- 1 boneless lamb shoulder roast (3 pounds)
- 3 tablespoons lemon juice
- 3 garlic cloves, minced
- 2 teaspoons dried oregano
- 2 teaspoons grated lemon zest
- 1/4 teaspoon salt
- 1 package (16 ounces) orzo pasta
- 2 packages (9 ounces each) fresh spinach, torn divided
- 1 cup (4 ounces) crumbled feta cheese, divided

### DIRECTIONS

1. Cut roast in half. Place in a 5-qt. slow cooker. Drizzle with lemon juice. Sprinkle with the garlic, oregano, lemon zest and salt. Cover and cook on low for 8-10 hours or until meat is tender.
2. Cook orzo according to package directions. Remove lamb from slow cooker. Shred meat with two forks; set aside and keep warm.
3. Skim fat from cooking juices if necessary; return 1 cup cooking juices to slow cooker. Add one package of spinach. Cook on high for 5-10 minutes or until spinach is wilted. Drain orzo; add to spinach mixture. Stir in reserved meat and 1/2 cup feta cheese.
4. To serve, arrange remaining fresh spinach on nine individual plates. Top with lamb mixture. Sprinkle each with remaining feta cheese.

### Nutrition Facts

1 each: 438 calories, 11g fat (4g saturated fat), 105mg cholesterol, 333mg sodium, 41g carbohydrate (2g sugars, 3g fiber), 41g protein.





*If you have a recipe that you and your family like, send it to KHSI Operations at [info@katahdins.org](mailto:info@katahdins.org) or call 717-335-8280 ext 1.*

*We look forward to your recipes.*

*If your recipe is based on (or copied from) a published recipe, please provide the proper credit.*

# Regional Katahdin Groups

COALFIELD	EAPK	RMKA
 <b>Coalfield Hair Sheep Association</b>	 <b>Eastern Alliance for Production Katahdins</b>	 <b>Rocky Mountain Katahdin Association</b>
<ul style="list-style-type: none"> <li>The mission of the Coalfield Sheep Association is to provide shepherds the opportunity to share educational, marketing, operational ideas and to promote Katahdin hair sheep as a viable agricultural endeavor.</li> </ul>	<ul style="list-style-type: none"> <li>A new group of Katahdin producers whose mission is to advance the development of production-oriented Katahdins using quantitative genetic selection.</li> <li>Open to all registered and commercial producers.</li> </ul>	<ul style="list-style-type: none"> <li>RMKA is an agricultural non-profit organization dedicated to the promotion of the Katahdin Hair Sheep in the Rocky Mountain region.</li> </ul>
contact: Seth Baker 276-219-0902 <a href="mailto:seth@sethbakerlaw.com">seth@sethbakerlaw.com</a> Pete Odle 276-525-0727 Brad Mullins 276-926-4605 <a href="mailto:wmullins@vt.edu">wmullins@vt.edu</a>	<a href="https://easternalliancekatahdins.com">https://easternalliancekatahdins.com</a> contact: Lee Holcomb 704-657-0742 <a href="mailto:ljholcomb2583@gmail.com">ljholcomb2583@gmail.com</a>	 <b>RockyMountainKatahdin Association</b> <a href="https://rmka.org/">https://rmka.org/</a> contact: Babette Fief 719-384-4000 <a href="mailto:babfief@yahoo.com">babfief@yahoo.com</a>
President – Seth Baker Vice Pres – Gilmer Childress Sec – Courtney Belcher Treasurer – Luke Mullins	President – Lee Holcomb - NC Vice Pres – Brad Carothers - KY Sec – Camren Malerie - OH Treas – Isabel Richards - NY	President – Babette Fief - La Junta, CO Vice Pres – Richard Blosser - Hitchkiss, CO Sec-Treas – Gary Holyoak - Twin Falls, ID
Quarterly Meeting: March Annual Coalfield Sheep Sale August 16, 2025, Clintwood, VA	Annual Symposium & Sale: July 11-12, 2025, Elizabethtown, KY	Annual Meeting: June 19-20, 2025, USDA-ARS facility, Miles City, MT

MOKATS	SCKA	TEXKATS
 <b>Missouri Katahdin Breeders</b>	 <b>South Central Katahdin Association</b>	 <b>Texas Katahdin Hair Sheep Association</b>
<ul style="list-style-type: none"> <li>MOKATS online production sale TBA.</li> </ul>	<ul style="list-style-type: none"> <li>Provide a marketing alliance for all members of SCKA</li> <li>Provide fellowship</li> <li>Assist breeders of Katahdin sheep in the sale &amp; promotion of the breed</li> <li>Formed 1999 in New Iberia, LA</li> </ul>	<ul style="list-style-type: none"> <li>The mission of TexKats is to promote the Katahdin breed in Texas and surrounding areas, support the unique needs of Katahdin producers in an educational fashion, to share knowledge, and to encourage standards of excellence.</li> </ul>
<a href="https://www.facebook.com/groups/473747909310079/">https://www.facebook.com/groups/473747909310079/</a> contact: Becky Shultz 573-239-7553 <a href="mailto:beckyshultz@msn.com">beckyshultz@msn.com</a>	<a href="http://hair-sheep.com/">http://hair-sheep.com/</a> contact: Jean Adams 337-515-4240 <a href="mailto:sckatreasurer@gmail.com">sckatreasurer@gmail.com</a>	<a href="https://texaskatahdins.com/">https://texaskatahdins.com/</a>  <b>Facebook: TexKats</b> <b>Facebook Group: TexKats-The Sheep Connection</b> contact: Bill Brown 325-812-4930 <a href="mailto:texkats@gmail.com">texkats@gmail.com</a>
President – Cindy DeOrnellis - MO Vice Pres – Clay Winder - MO Sec-Treas – Becky Shultz - MO	President – Jim Hill – MS Vice Pres – Angeliki Polles, MS Treas – Jean Adams - LA Secretary – Helen Glaze - MS	President – Bill Brown - TX Vice Pres – Marti Carlson - TX Secretary – Clifford Spraberry - TX Treasurer – Heidi Barber - TX
Annual meeting TBA	Next meeting: Annual Gathering & Private Treaty Sale May 30-31, 2025 New Albany, MS	Texas Sheep Field Day & Private Treaty Sale, May 9-10, 2025, Gatesville, TX

NOTE: Pacific Coast Katahdin Sheep Association (PCKHSA) is re-organizing.  
<https://www.facebook.com/groups/317587374481/>  
 Contact Debra Blake, President,  
 503-467-8577 [djkblake53@yahoo.com](mailto:djkblake53@yahoo.com)  
 or Karen Kenagy  
 503-351-6978  
[krkenagy@hotmail.com](mailto:krkenagy@hotmail.com)

Information about regional Katahdin groups is provided as a service. They are separate organizations from KHSI, provide great networking opportunities and require separate memberships.

# Advertisers Index (listed alphabetically)

AM Star Katahdins, Roger & Lisa Garland, Indiana.....	18
Big Tom's Con-O-Creek Farms, Tom Perkins, Pennsylvania.....	26
Block Katahdins, Bruce Block, Illinois.....	6
Bluestem Farm, Art & Judy Sheridan, Texas.....	42
BoNus Angus Farm, Bob & Amanda Nusbaum, Wisconsin.....	20
Buckeye Acres, Ron & Carla Young, Ohio.....	16
Burbrink Show Stock, Brayden Burbrink, Indiana.....	34
Burnham & George Katahdins, Joyce Burnham & Steve George, Illinois.....	35
Caney Creek Farms, Dwayne & Kathy Kieffer, Tennessee.....	20
Canfield Farms, Kirk & Michelle Canfield, Washington.....	41
Cedar Creek Farm, Michael Stumpf, Tennessee.....	18
Circle B Farm, Margaret Buck, Ohio.....	26
Coalfield Sheep Association, Brad Mullins.....	9
Country Lane Farms, Melvin Hostetler, Pennsylvania.....	8
Dyer Family Katahdins, John, Judy & Scott Dyer, Indiana.....	23
Ewe Lamb Right, Dan & Jan Turner, Pennsylvania.....	back cover
Fahrmeier Katahdins, Lynn & Donna Fahrmeier, Missouri.....	10
Finder Katahdins & Maremmas, Warren & Pam Finder, Kansas.....	37
Flat Creek Ranch, Bentley Martin, Flat Creek Ranch.....	15
Fox Valley Katahdins, Kenneth & Lorelle Zimmerman, Iowa.....	38
Francis Family Farms Katahdins, Tony Francis, Missouri.....	58
Gem State Katahdins, Nate Miller, Idaho.....	12
Gingerich Family Katahdins, Joe & Silas Gingerich.....	13
Gleaves Farm, David & Leah Gleaves, Tennessee.....	7
Grandpa's Farm Katahdins, Kara Nelson/Dustin Koyle, Iowa.....	33
Hall Katahdins, John Hall, Maryland.....	31
Hilltop Katahdins, Brian Martin, Pennsylvania.....	17
Julian and Moore Sheep Company, Ed Julian, Ohio.....	25
Kevin Stewart Katahdins, Kevin Stewart, Kentucky.....	57
KHSI Expo, Marti Carlson.....	40
KHSI cook off/expo, Marti Carlson.....	39
KHSI registry, Brenda Lobdell Scheider.....	49
Kiefer Sheep Farm, Chad & Elizabeth Kiefer, Missouri.....	2
KRK Katahdins, Karen Kenagy, Oregon.....	19
Lauden Acres Katahdins, Marshall Koppenhaver, Pennsylvania.....	28
Lillehaugen Farms, Luke & Maynard Lillehaugen, North Dakota.....	38
Luzon Farm, Ed & Cindy DeOrnellis, Missouri.....	43
Misty Oaks Farm, Ed & Kathy Bielek, Ohio.....	31
Paragon Farm LLC, Elvin Hoover, Pennsylvania.....	46
Phillips Family Farm, Becky & Ken Phillips, Pennsylvania.....	23
Prairie Lane Farm, Henry & Becky Shultz, Missouri.....	1
Rack of Lamb Corral, Todd & Renee Bauer, Kansas.....	32
Reed's Family Farm, Leanne Reed, Kentucky.....	21
Riviera, Mike & Leslie Nelsh, Ohio.....	48
Rodman Farms, David Rodman, Missouri.....	11
Round Mountain Consulting, Jim Morgan & Teresa Maurer, Arkansas.....	47
Select Livestock Services, Gary Saylor, Ohio.....	27
Smohalla Acres, Timothy Rhodes, Ohio.....	23
Sturdy Post Ranch, Justin & Crissa Fruechte, South Dakota.....	44
Thousand Oaks Ranch, Kevin & Tony Beatty, Missouri.....	24
Triple L Farm, Larry & Lisa Weeks, Virginia.....	36
Ulry Farms LLC, Daniel & Marty Ulry, Ohio.....	22
Waldoview Farm, Tom & Lindsay Hodgman, Maine.....	45
Whitmer Livestock Farm, Brian Whitmer, Missouri.....	42
Xpressions, Gail Hardy, Missouri.....	38

WE WILL HAVE  
PROVEN EWES  
ALONG WITH THIS  
YEAR'S LAMBS  
AVAILABLE OFF THE  
FARM.

LOOK FOR OUR SHEEP IN  
CONSIGNMENTS  
TO THESE SALES IN 2025:  
"THE ROCK 3RD ANNUAL  
PRODUCTION KATAHDIN  
SALE"  
MIDWEST STUD RAM SALE  
KHSI EXPO



KEVINSTEWART@REAGAN.COM

(606)271-1812



*Lot 1*

*Laswell Farms 2425*

*"The Rock Sale"*

We will have a great set of spring born lambs available off the farm as well as in "The Rock Production Katahdins Sale" June 3rd at PLauctions.live. Scan the QR code in this ad for more details.



(606)308-1212  
laswellfarms@yahoo.com



You're Invited &

# OPEN HOUSE

04.26.25

# ONLINE SALE

06.03.25

Our consignment sale & open house offerings are shaping up to be some of the best we have offered!



Throwin Spades

We are impressed with the quality of Throwin Spades lambs! Just check out the video of his lambs on our Facebook page. He will be heavily used for both fall and spring breeding.



Twin fall born rams sired by Tippin Point. One or both will be available. Half siblings to Champion Ram at 2024 Ohio Showcase! Video on FB page.



Power Drive

Power Drive lambs have been a hit for the past couple of years. Both fall & spring lambs will be offered.



TOR 21-242 'Ice'

Ice was only with us for a short period of time. While the number of lambs are limited, the quality is impressive!



## 2025 Sale Details:

OPEN HOUSE: Saturday, April 26th starting at 11 a.m.

ONLINE SALE: Tuesday, June 3rd on wlivestock.com

## Consigning to:

Ohio Showcase - Greenville, Ohio

All-American Nugget - Reno, Nevada

Midwest Stud Ram Sale - Sedalia, Missouri

KHSI Expo - Evansville, Indiana

Watch our Facebook Page for more updates and consignment pictures at Francis Family Farms Katahdins!

Be on the lookout for an exciting online offering of yearling ewes this summer. More details to come!

Tony, Barb, Britton, Brant & Aly Francis  
17292 Monroe Road 735 Paris, MO 65275

☎ 573-473-0633 ✉ TIGERCOUNTRYCORGIS@GMAIL.COM



KHSI  
c/o KHSI Operations  
P. O. Box 739  
Fowlerville, MI 48836  
717-335-8280

# MEASURED

## EWELAMBRIGHT

*excellence*



Ewe Lamb Right Farm strives to raise wholesome & healthy Katahdin hair sheep & lambs. Mostly grass and forage fed. Our sires are Katahdins with NSIP EBVs. Our commercial and registered flocks consist of Katahdin hair sheep, all enrolled in NSIP. We measure prolificacy, weight gain, and parasite resistance. We lamb throughout the year, optimizing our resources. We graze our fields and make our own hay. It is a privilege to be a farmer, and we work hard on the stewardship of our land and the promotion of lamb.



Dan & Jan Turner - Shippensburg, PA - danlturner44@gmail.com - (717) 512-8127